

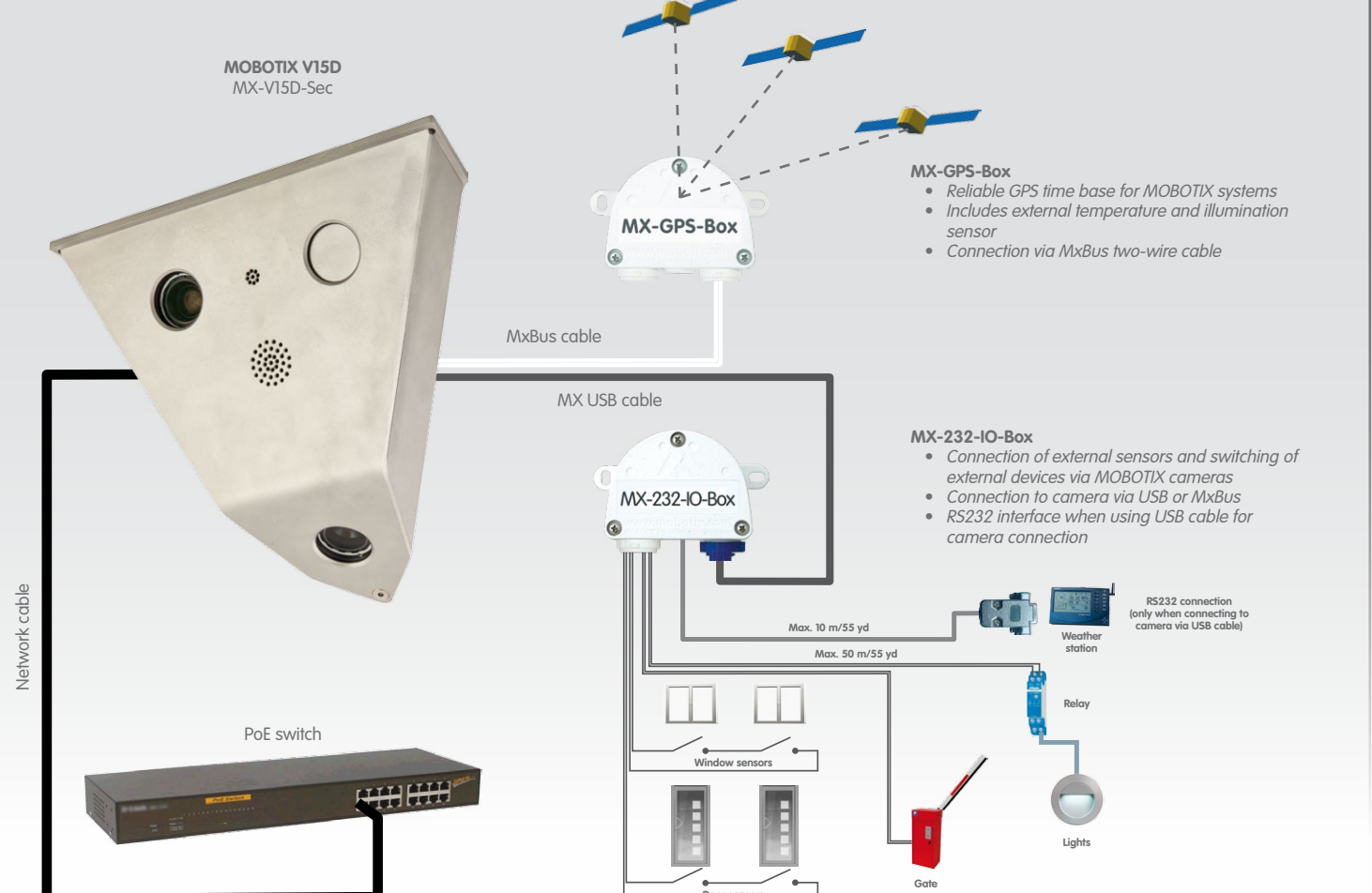
MOBOTIX IP Video Day and Night – Perfect Protection Against Vandalism



Vandalism-protected IP camera for corner mounting in 3 mm stainless steel casing; front plate and top cover made from 5 mm stainless steel; automatic day/night switch configurable; integrated microphone and speaker; all connections of S15D camera module available. Can be ordered with any lens combination (day/night) of the lenses L25, L38, L51, L76 and L160; one image sensor can be ordered pointing downwards.

- Network connection via Ethernet patch cable or installation cable
- Power supply via network cable and PoE switch
- Network connection via MOBOTIX Ethernet patch cable or installation cable
- MicroSD card with up to 64 GB, 4 GB installed
- MxBus connection for interface modules (e.g. MX-GPS-Box, MX-232-IO-Box)
- MiniUSB connection (e.g. MX-232-IO-Box)

Connection of Peripheral Devices (Examples)



Installing the V15D (Overview)



1 Check the Delivered Parts



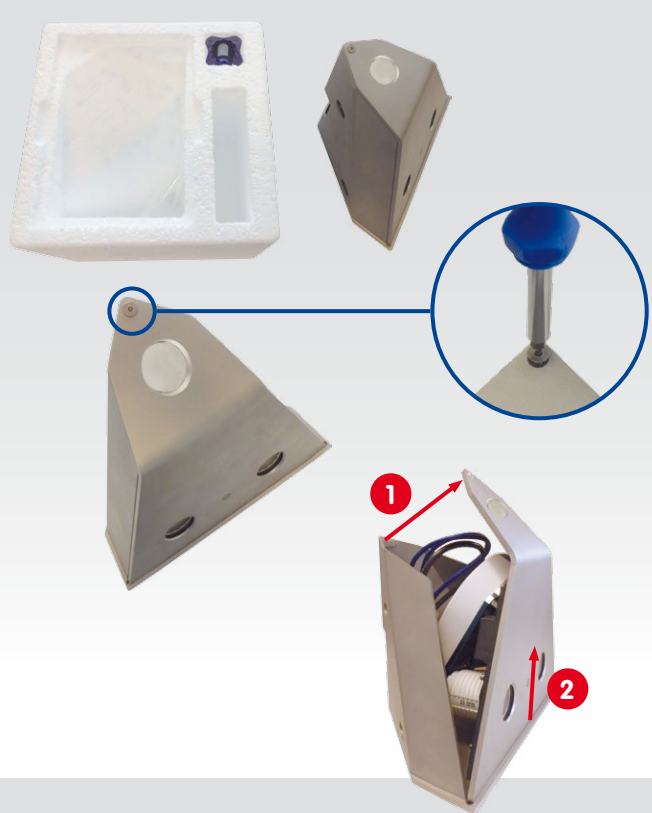
Item	Count	Part Name
1.1	1	Camera casing 3 mm stainless steel, top 5 mm stainless steel
1.2	1	Front plate 5 mm stainless steel (installed)
1.3	1	S15D (modified) with 2 sensor modules (any combination (day/night) of the lenses L25, L38, L51, L76 and L160) installed on front plate
1.4	2	Security screw stainless steel M5x12 (one installed, one supplied additionally)
1.5	1	MicroSD card 4 GB (installed in S15D)
1.6	1	Ethernet patch cable, 50 cm/19.7 in with sealings (installed)
Mounting Supplies		
M.1	1	Allen wrench 2 mm
M.2	1	Screwdriver bit for security screw M5x12
M.3	1	Multifunctional tool (lens, dome, filter insets)
M.4	1	Module key (for focusing the lenses)
Documentation		
D.1	1	S15D Camera Manual
D.2	1	V15D Drilling Template
D.3	1	V15D Quick Install (this document)

2 Unpack V15D and Remove the Front Plate

1. Take the V15D out of the box
Pull the top of the packaging and the V15D out of the box and place the V15D upside-down on a protected surface.

2. Remove security screw
Using the supplied screwdriver bit and a suitable bit holder (blue circle in figure), remove the security screw.

3. Remove front plate
Pull the top end of the front plate upward and forward **1**, then lift the entire front plate up and remove it from the casing **2**. Next, place the front plate face-down on the protected surface.



3 Replace the SD Card (optional)

1. Remove screws of the S15D camera module

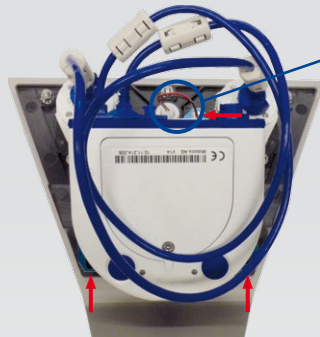
Remove the three Allen screws (red arrows in the figure) from the back plate using the supplied 2 mm Allen wrench (item M.1). When doing this, make sure that you are not damaging the two-wire microphone cable.

2. Replace SD card

Place the S15D camera module on a suitable object. Next, replace the SD card (4 GB) by a suitable MicroSD card (max. 64 GB), as described in the *S15 Camera Manual*, in Section 2.2.9, "Replacing the MicroSD Card".

3. Fasten S15D camera module

Place the S15D camera module in its original position, insert the Allen screws and tighten them (torque 0.85 Nm).

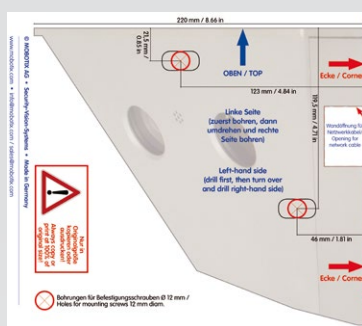


4 Install the Casing

1. Mark the holes for drilling (if required)

Mark the holes for the dowels using the drilling template. To do so, fold the template or cut it at the dashed line. Then mark the holes at the left-hand side, turn the template over and mark the holes on the right-hand side. If you do not want to use the drilling template, you can use the casing itself to mark the holes for drilling.

If the cables are led to the camera from behind, make sure that you place the cut-out over the spot where the cables are exiting.



Cables from above

2. Drill the holes for the dowels (if required)

Drill the holes for the dowels with a suitable drill bit. Next, fully push the dowels into the holes you drilled.



3. Install the casing

Make sure that you are guiding all cables to the camera module through the cut-out at the back of the casing. Properly fasten the casing using suitable screws and washers.

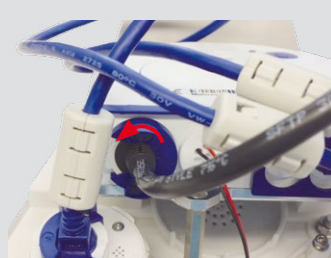
Make sure not to over-tighten the fastening screws since over-tightening may warp the casing!



5 Connect the Cables*

1. Replace the network cable (optional)

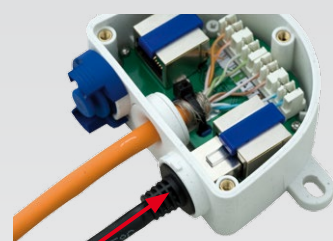
Turn the blue bayonet catch of the S15D to the left, then remove the catch and the installed patch cable (Pos. 1.6). Insert the new MOBOTIX patch cable into the network connector and fasten the cable using the blue bayonet catch.



* For additional information on attaching a network installation cable directly to an S15D, see the included *S15D Camera Manual*.

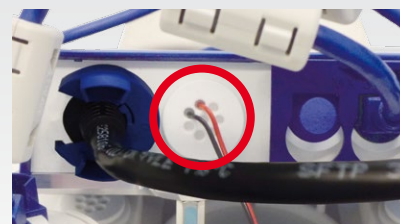
2. Connect the network cable

Guide the other end of the patch cable through the cut-out and then into a weatherproof connector (e.g. the MX-Patch-Box) or into a switch. For additional information on this topic, see the *S15 Camera Manual* in Section 2.5.1, "Network Cabling for S15 With Patch Cables".



3. Connect additional cables (optional)

Connect additional cables (e.g. for MxBus modules) by pushing the individual wires into the 8-wire plug (red circle in the figure). For additional information on this topic, see the supplied *S15 Camera Manual* in Section 2.2.7, "Using MxBus Modules", and in Section 2.2.8, "External Audio Support".



4. Take care when routing the cables

Make sure that all cables are routed in such a way that they are not damaged between the front plate and the casing when inserting and closing the front plate. For example, you can use a cable tie (red circle in figure) to hold the cables together.



6 Install the Front Plate

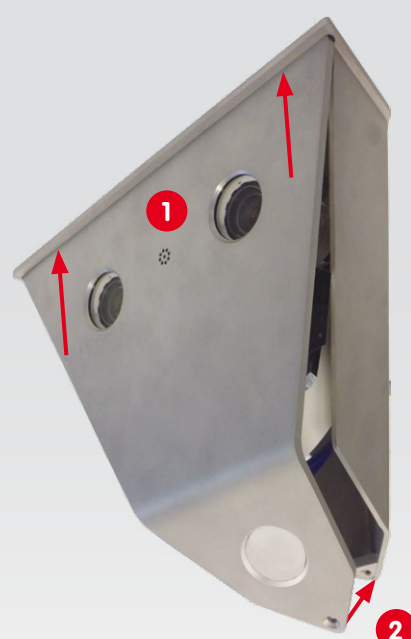
1. Prepare closing the front plate

Prepare this step by inserting the supplied screwdriver bit into the bit holder and placing the security screw onto the bit. Keep the bit holder and screw within reach when installing the casing.



2. Insert the front plate

Insert the front plate into the casing upward in the direction of the red arrows **1**. Push the front plate at the bottom towards the casing **2** and secure the front plate with one hand.



3. Close the front plate

Push the security screw upwards into the thread and fasten the screw (torque 1 Nm).



Initial Operation

Since the V15D contains a modified version of the S15D, the initial operation of the V15D is identical with the initial operation of a S15D (see *S15 Camera Manual*, Chapter 3, "Operating the Camera").

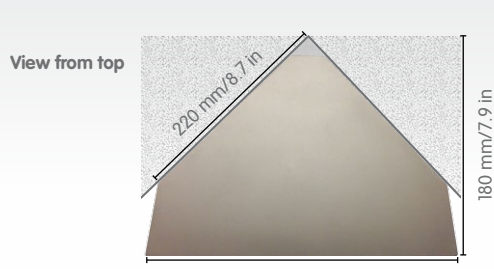
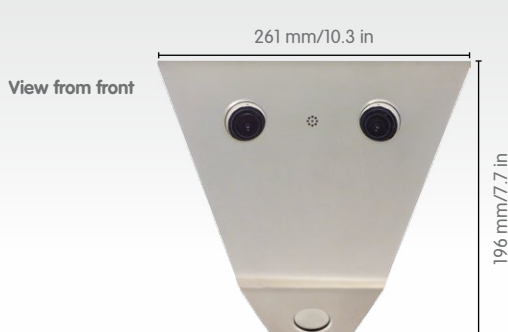
The following differences apply:

- **No Hemispheric Features:** Since this version of the S15D cannot be operated with L12 lenses, the Hemispheric features and certain display modes (Panorama, Panorama/Focus, ...) are not available.
- **Using distortion correction:** Specific lenses of this camera (e.g., L25) allow using distortion correction. Access the browser interface of the camera and open the **Admin Menu > Lens Configuration** dialog and select the corresponding value (e.g., L25).

Technical Specifications

The technical data of the V15D are – to the most part – identical to those of the S15D (see *S15 Camera Manual*, Section 1.8, "Technical Data"). The differences to the technical data of the S15D are shown in the table below:

Technical Data V15D Vandalism (MX-V15D-Sec)	
Dimensions	Width x height x depth: 261 x 196 x 180 mm
Weight	Approx. 4,680 g
Standard Delivery	Casing 3 mm stainless steel, top and front plate 5 mm stainless steel S15D with 2 sensor modules (day/night) of the lenses L25, L38, L51, L76 and L160 installed on front plate (one image sensor can be ordered pointing downwards), 50 cm patch cable (installed), lens wrench, Allen wrench 2 mm, S15D Camera Manual, V15D Quick Install, Drilling Template



HiRes Video Innovations – Made in Germany

The German company MOBOTIX AG is known as the leading pioneer in network camera technology and its decentralized concept has made high-resolution video systems cost-efficient.

MOBOTIX AG • D-67722 Langmeil • Tel: +49 6302 9816-103 • Fax: +49 6302 9816-190 • sales@mobotix.com