



Professional Video Solutions

6MP Moonlight • VMS • Dual Thermal • IP Access Control • Analytics



Product Highlights:

- 6MP Moonlight Technology
- VMS MxManagementCenter
- c25 & i25 Hemispheric Indoor Cameras



Contents

Welcome	4
MOBOTIX Milestones	4
MOBOTIX Technology	6
Product Selection Guide	8
Dual-Lens and Thermal Cameras	10
M15D AllroundDual Camera	10
M15D-Thermal Camera	12
S15D FlexMount Camera	14
D15D DualDome Camera	16
V15D Vandalism Camera	18
Single-Lens Cameras	20
c25 Hemispheric Camera	20
i25 Hemispheric Camera	22
Q25M Hemispheric Camera	24
D25M Dome Camera	26
M25M Allround Camera	28
S15M FlexMount Camera	30
Hemispheric IP Video Door Station	32
Introduction	32
Door Station Modules	34
Easy Installation	36
MxDisplay	38
Software	40
MxManagementCenter	40
MOBOTIX App	46
MxActivitySensor	48
MxAnalytics	50

MOBOTIX 6MP Moonlight Sensor Technology

MOBOTIX 6MP cameras offer maximum light sensitivity and deliver highly detailed images with significantly reduced motion blurring even under the most difficult light conditions.

System Accessories	52
Weatherproof Interface Boxes	52
Mx2wire+ Media Converter	54
ExtIO Module	56
NPA-PoE Set	57
Mount Selection Guide	58
S15D Mounts	60
Optics	62
M15D/S15D Sensor Modules	62
S15D BlockFlexMount & Longpassfilter	64
D15D Lens Units	65
Lens Table	66
The MOBOTIX Concept	68
Decentralized System	68
Hemispheric Technology	69
Superior Image Quality	70
Cost Benefits In Every Respect	72
Inspiring Technology	73
MOBOTIX Campus	74
Additional Information	76
Glossary	76
References	78

Made in Germany



Thanks to the highest manufacturing standards, MOBOTIX cameras are continuing to satisfy the requirements of the most demanding installations by delivering an exceptionally long product life and the utmost in reliability and security (see «References» on page 78).

MOBOTIX Milestones



2000
→
MOBOTIX Decentralized Concept
All Intelligence Inside

MOBOTIX has completely changed the architecture of IP video. The camera is a complete surveillance system including long-time recording.



2003
→
MxPEG Perfect for Security
First Quality Video Codec

MxPEG was developed to achieve the best image quality at every single frame and is still today the only preferred video codec for security applications.



2011
→
First IP Video Door Station
Access Control Inside

With the first IP video door station, MOBOTIX has started to combine hemispheric video with no blind spots and IP based access control.



2013
→
MxActivity Sensor
Game Changer in Motion Detection

MxActivity Sensor has revolutionized motion detection in video surveillance with the lowest configuration time and highest success rate to avoid false alarms.

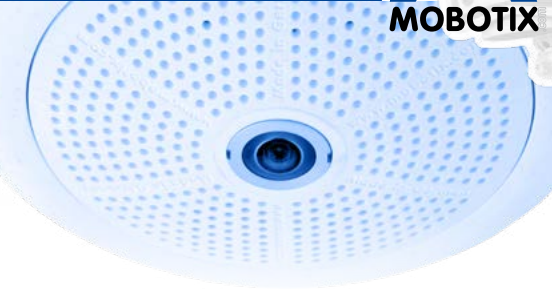


2005



SIP compliant and Audio Worldwide
Available in all cameras

Every camera is VoIP compliant based on worldwide SIP standard including video, featuring camera control and automatic alarm calls.



2008



World First Hemispheric
IP Camera Q22

Introducing hemispheric technology has revolutionized IP Video with real 180° panorama and the best corrected image quality in the market.



2014



World First Combination
of Thermal, Video and Motion Detection

The MOBOTIX concept has changed the architecture and industry. The camera is now a all-in-one system, setting the basis for new features and functions inside the camera.



2015



6MP Moonlight Technology
Best Light Sensitivity in the Industry

New groundbreaking technology perfect for color images without any motion blurring in dark room or outdoor moonlight scenarios.

MOBOTIX Technology



Decentralized Video

MOBOTIX is the pioneer of decentralized IP video systems, creating the first IP cameras that do not require a central PC (DVR). This decentralized in-camera intelligence allows users to build cost-effective systems that can be easily scaled even for terabytes of automatic video recording using standard IT storage and networking devices – no DVRs or VMS required (see page 68).

Software 100% Included

Every MOBOTIX camera comes with all the software necessary to create a high-quality surveillance system. Advanced functions are built into the camera, such as video management, image analysis, and VoIP calling. Professional Video Management Software (VMS) without limits is included for Windows, Mac and Linux at no cost (see pages 40-45).

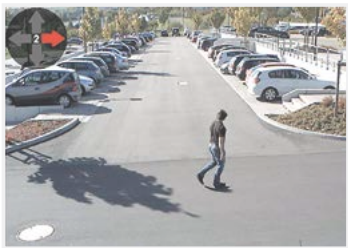


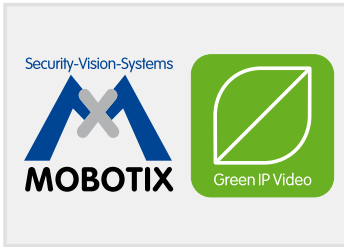
Intelligent Imaging

Images are optimized, not by a PC, but in the camera. That's right, image correction (dewarping) and resizing is applied inside the camera first, for improved bandwidth management and storage minimization. This makes high quality capture and streaming of Hemispheric video possible across local and mobile networks (see page 69).

Innovative Motion Analysis

MOBOTIX' pursuit of innovation keeps it at the forefront. MxActivitySensor is a revolutionary technology that only registers traveling movement of people and objects, while dismissing all redundant changes in the scene like shaking trees in the wind or moving camera poles. This drastically reduces the number of false alarms of more than 90% (see page 48).



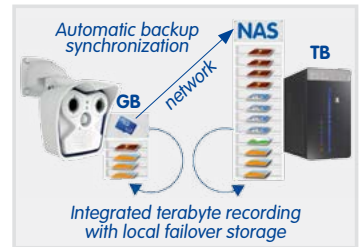


Energy Efficiency

MOBOTIX systems offer unprecedented energy efficiency using considerably less power than other brands. MOBOTIX Moonlight and Lowlight technologies bring further savings in energy usage, as it enables our camera to capture high-quality video with only a minimal amount of artificial lighting.

Safe Recording With Failover Storage

The microSD card fitted into every MOBOTIX camera is a backup storage device, that continues to capture video recordings should the external network recording device fail (MxFFS Archive Storage). When reconnection is made, the camera will resync the recordings with the central recording device. No dedicated DVR or VMS is required to manage this fail-over process and to record terabytes of video.



Maintenance Free

Every MOBOTIX camera is a solid investment, built to withstand extreme weather conditions and temperatures for a very long time without moving parts. No additional housings or climate control systems are needed for outdoor installation. The fibre glass re-inforced outer housing that protects the camera and is immune to corrosion and direct sunlight.

Privacy And Data Security


Every MOBOTIX system includes sophisticated password security with supervisory protection for users and cameras. Layered with our fully encrypted two-wire MxBus connectivity system and power backup, MOBOTIX offers unrivalled system privacy and data security. Recordings are encrypted to guarantee the security of the data.




Product Selection Guide


Built-in VoIP functionality for 2-way communication is standard on all Sec & IT models.

Robust Can withstand extreme conditions		Flexible For customized and discreet surveillance		Armored Firearm resistant
	 		 	
M25M Single-Lens see p. 28	M15D Dual-Lens see p. 10	S15M Single-Lens see p. 30	S15D Dual-Lens see p. 14	V15D Dual-Lens see p. 18
   	   	    	    	 
Mounting Options				
 <i>Ceiling Mount</i>	 <i>Ceiling Mount</i>	 <i>AudioMount</i>	 <i>Extension Set 15°</i>	 <i>Vandalism housing</i>
 <i>Wall Mount</i>	 <i>Wall Mount</i>		 <i>DualMount</i>	 <i>Lens alignment 1</i>
 <i>Pole Mount</i>	 <i>Pole Mount</i>		 <i>SurroundMount</i>	 <i>Lens alignment 2</i>
			 <i>HaloMount</i> <i>SpeakerMount</i>	
		 <i>PTMount</i>		


 Designed to withstand high humidity and extreme conditions.


 Dual-lens camera with optional day/night lenses and automatic switching.


 Can handle direct sunlight and extremely high temperatures.


 Super-wide Hemispheric video capture.

Traditional Standard form factor	Versatile Adjustable dual lenses	Discreet Blends into surroundings	Indoor Wall or ceiling	Access Control Door communication
				
D25M Single-Lens see p. 26	D15D Dual-Lens see p. 16	Q25M Single-Lens see p. 24	c25 & i25 Single-Lens see p. 20-23	T25M Single-Lens see p. 32
				
Mounting Options				
 <i>Vandalism Set</i>	 <i>Vandalism Set</i>	 <i>Vandalism Set</i>	<i>i25</i>  <i>Wall-mountable</i>	<i>with KeypadRFID or BellRFID</i> 
 <i>In-Ceiling Set</i>	 <i>Wall Mount</i>	 <i>In-Ceiling Set</i>	<i>i25</i>  <i>In-Wall Mounting Set</i>	<i>with InfoModule</i> 
 <i>On-Wall Set</i>	 <i>Corner/Pole Mount</i>	 <i>10° On-Wall Set</i>	<i>i25</i>  <i>On-Wall Mounting Set</i>	<i>with KeypadRFID & InfoModule</i> 
 <i>Wall Mount</i>	 <i>Corner/Pole Mount</i>	 <i>Wall Mount</i>	 <i>MX-Bus-IO-Module</i> <i>c25</i>  <i>Ceiling-installation</i>	<i>with BellRFID & InfoModule</i>  

 LPF sensor option available for accurate number plate capture (ANPR/LPR).

 Can be used as a door camera, connection of door station modules possible.

 For discreet or customized surveillance in transport, POS, ATMs, machinery etc.

 Thermal sensor options available for highly accurate alarming in all lighting conditions.

M15D AllroundDual Camera



LEFT Sensor



RIGHT Sensor

Robust. Most Advanced Design.

The M15D features two light-sensitive image sensors and two lenses that allow the camera to generate sharp color videos and high-contrast B&W videos, even in dark situations. The electronic switching between the day and night system is automatic, with no moving parts and is based on light conditions to ensure reliable operation at any temperature and in any weather.

10

from €1,050

Intelligent Dual-Lens Surveillance

Along with an integrated microphone, speaker and sensor to record the ambient temperature, the weatherproof housing (IP66) features automatic recording onto SD cards and secure video motion analysis (MxActivitySensor) with alarm messaging.



Fast, Cost-Effective Installation

The M15D ships as a complete kit, including wall & ceiling mounts and other mounting accessories. As with all MOBOTIX cameras, no additional software, housings or cooling/heating fans are required.

IP66
+60°C
-30°C

Robust Design

By design, the M15D is the most robust of the entire MOBOTIX range of products. With an IP66 weatherproof rating, it can withstand extreme temperatures and the harshest of conditions.



Fully Integrated Future-proof System

The all-in-one sensor modules can be swapped out within minutes, thanks to our new modular hardware platform. The integrated locking system ensures the sensor modules remain fixed in place.

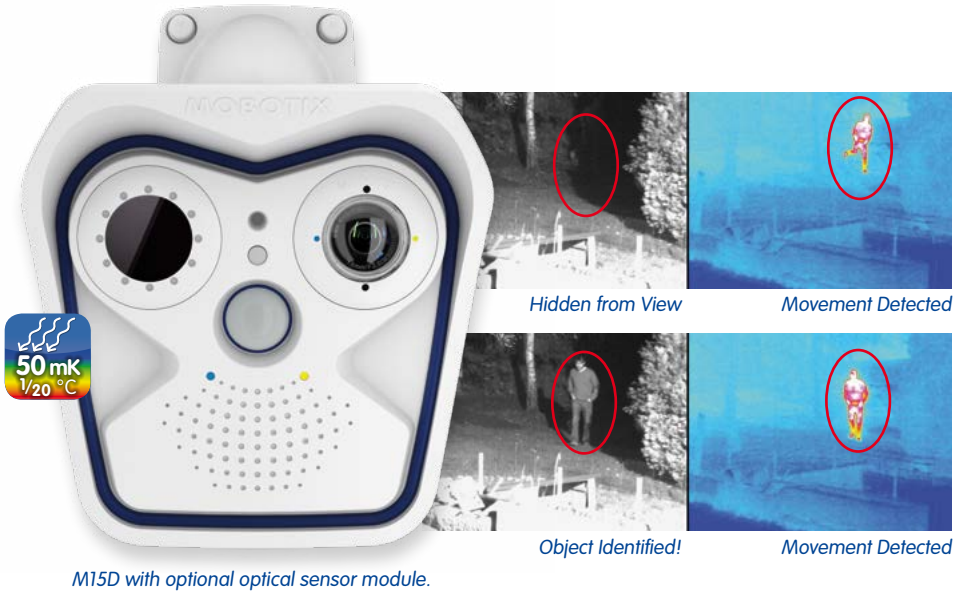
from €198

Technical Data

Technical Data			
Models	Sec	Lens Options	L10 to L270
Image Sensors	1/1,8" CMOS (6MP)	Sensor Resolution	6MP: 3072x2048 pixels (Color/B&W)
Max. Frame Rate (MxPEG)	MEGA/HD: 30 fps, QXGA: 15 fps, 6MP: 8 fps (2x 6MP: 4 fps)	Compression	MxPEG, M-JPEG, JPEG, H.264 (SIP video)
DVR Recording	Internal: microSD Card External: PC/NAS (to 4 TB)	Audio	Integrated microphone & speaker, VoIP, intercom, sound recording
Operating Conditions	IP66, IK06, -30 to +60 °C/-22 to +140 °F	Internal Sensors	Temperature, PIR, microphone illumination, shock detector
Image Processing	MxActivitySensor, VMD, image correction, backlight	Software (free of charge)	MxManagementCenter, MxControlCenter, MxEasy, MOBOTIX App

M15D – Reliable Even Under Extreme Conditions

The M15D camera is certified according to IP66 and has been successfully tested in a temperature range of -30 to +60 °C/-22 to +140 °F. In line with the proven MOBOTIX product strategy, the M15D model does not require additional cooling, heating or a special housing, and only five watts to be fully operational.

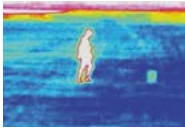


Thermal. Dual-Lens Camera. Detect And Identify.

Based on the revolutionary M15D hardware platform, the M15D-Thermal is equipped with a pre-installed thermal image sensor that detects vehicles and people in total darkness with extremely high accuracy. A second optical sensor module can be fitted to provide positive object identification for complete lowlight security.

M15D-Thermal – Weatherproof Thermographic PoE Dual Camera

The modular design of the M15D platform provides the ultimate in flexibility. The M15D-Thermal is factory-fitted with a thermal image sensor for accurate movement detection over long distances in all lighting conditions. An additional (optional) image sensor is used to identify people and objects.



Thermal

Thermal: Detect Movement Around The Clock

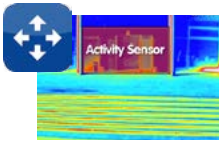
High thermal resolution allows moving object detection up to 400 m (437 yards) in total darkness and in all conditions such as smoke, dust, fog. No lighting required.



Optical

Optical: Identify Objects

The M15D-Thermal dual-lens design allows for a secondary optical lens to be fitted for clear identification of facial features, clothing, license plate numbers, vehicle color etc.



Thermal

Privacy Zone – Identification And Recognition On Event

Combined with **MxActivitySensor**, the camera automatically switches from thermal sensor to optical sensor, when an object moved into the pre-defined privacy zone. This ensures the identification and recognition of moving objects only when MxActivitySensor triggers an alarm.

Technical Data

Models	Thermal-43 Thermal-65 Thermal-135	Lens Options	Thermal: L43, L65, L135 (factory-fitted, not interchangeable) Optical: L10 to L270
Optical Image Sensor	1/1,8" CMOS (6MP)	Optical Sensor Resolution	6MP: 3072x2048 pixels (Color/B&W)
Thermal Image Sensor	Uncooled microbolometer temp. measuring range from -40 to +550 °C/-40 to +1,022 °F.	Thermal Sensor Resolution	Thermal: 336x252 NETD typically 50 mK (1/20 °C) MTBF > 80,000 hours
Max. Frame Rate (MxPEG)	Thermal only: max. 9 fps Thermal and optical: 9 fps Optical only: 30 fps	Compression	MxPEG, M-JPEG, JPEG, H.264 (SIP video only)
DVR Recording	Internal: microSD Card External: PC/NAS (to 4 TB)	Audio	Integrated microphone & speaker, VoIP, intercom, sound recording
Operating Conditions	IP66, IK06, -30 to +60 °C/-22 to +140 °F	Internal Sensors	Temperature, PIR, microphone illumination, shock detector
Image Processing	MxActivitySensor, VMD, image correction, backlight	Software (free of charge)	MxManagementCenter, MxControlCenter, MxEasy, MOBOTIX App

Movement Detection In All Conditions

The M15D and S15D thermal sensors detect objects in complete darkness and/or through fog and smoke. Primarily designed for accurate movement detection over large areas such as border protection and coastal monitoring. The M15D-Thermal camera has a super low power consumption – max. 5.5 W.

6MP Moonlight Technology



*Optical sensor modules
see page 62*



Indoors and outdoors

Flexible. Virtually Invisible Dual-Lens Camera.

With its unique fusion of dual sensor technology and flexmount design, the S15D covers two areas at once and is virtually invisible. The S15D has been perfectly created for customized solutions or installations where standard cameras simply won't fit.

Weatherproof Thermal Sensor Modules (L45, L65 and L135)



The S15D can also be operated with one or two thermal sensor modules. Objects can be detected in total darkness, smog or smoke thanks to infrared technology. The thermal sensor modules feature low power consumption of only 1.5 W each (NETD: typically 50 mK; MTBF: >80,000 hours; temperature measuring range: -40°C to +550°C/-40°F to 1022°F).



Flexible Installation

The S15D core unit miniature size fits into tight spaces (ATMs, machinery, vehicles). The flexible 2 m/6.6 ft video cables make it a easy to create customized installations (see page 60).



Double Hemispheric = 360° Full Spherical Capture

This cost-effective solution can simultaneously capture and record two super-wide 360° fields of view, providing the same coverage as eight standard CCTV cameras.



White

Black

Virtually Invisible

With a diameter of only 50 mm/1.96 in and available in both white and black, the S15D sensor modules blend in with any environment. Ideal for applications where standard-sized cameras are unsuitable.



Secure Two Areas With One Device

The two flexible video cables allow for coverage of two separate areas. Just one S15D can secure two separate rooms, an indoor and outdoor area and around corners.

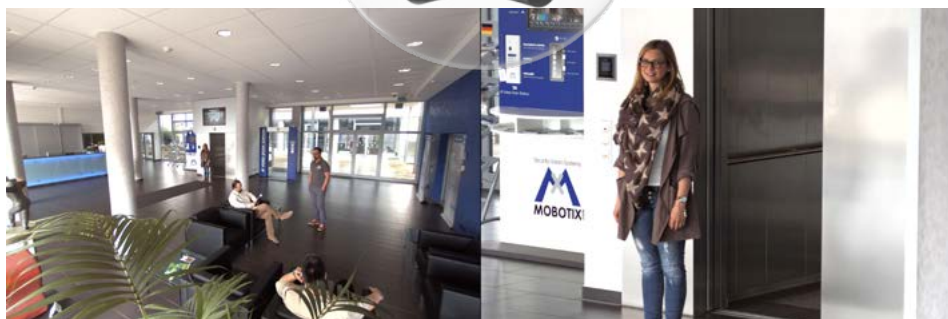
Technical Data

Models	Sec	Lens Options	Optical: L10 to L270 Thermal: L43, L65, L135
Image Sensors	1/1,8" CMOS (6MP)	Sensor Resolution	6MP: 3072x2048 pixels (Color/B&W)
Max. Frame Rate (MxPEG)	MEGA/HD: 30 fps, QXGA: 15 fps, 6MP: 8 fps (2x 6MP: 4 fps) Thermal: 9 fps	Compression	MxPEG, M-JPEG, JPEG, H.264 (SIP video only)
DVR Recording	Internal: microSD Card External: PC/NAS (to 4 TB)	Audio	2-way VoIP available with accessories such as the SpeakerMount
Operating Conditions	IP65, IK06, -30 to +60 °C/-22 to +140 °F	Internal Sensors	Temperature, microphone, illumination, shock detector
Image Processing	MxActivitySensor, VMD, image correction, backlight	Software (free of charge)	MxManagementCenter, MxControlCenter, MxEasy, MOBOTIX App

Manual PT-Mount With Integrated Thermal Sensor

MOBOTIX offers the weatherproof PTMount-Thermal (IP65), an attractive, compact, discreet and dome-shaped mount that is adjustable in three directions and contains a pre-installed MOBOTIX L43, L65 or L135 thermal sensor module. For additional information on the PTMount-Thermal see page 63.





Adjustable lens modules can capture two different areas from one camera.

Versatile. Twice As Vigilant.

The D15D is a dual-lens dome camera with two freely manoeuvrable lens modules providing a wide range of fully adjustable viewing options. The D15D-Sec-180 model delivers a super-wide panorama view in super-high resolution.

D15D – Fixed Dome With Two Lenses

The D15D is able to secure two different areas simultaneously. The key advantage of the D15D is its adjustable lens configuration. Once installed, the lenses can be manoeuvred into any position.



Adjustable Lenses

Versatile Installation

Choose from various lens units, all fully adjustable in any direction within the camera. This, combined with the dual-lens system provides practically unlimited viewing options from one camera.



180°

Panoramic View

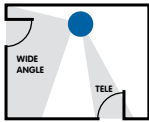
The D15D-Sec-180 model captures a super-wide view, with a combined maximum recording resolution of 12 megapixels. The fixed lenses can be manually adjusted up/down, swivelled left/right for viewing adjustment.



Fixed Lenses

Day & Night Capture

The D15D-Sec-DNight-Fix includes a locked-lens system with parallel alignment of two lens units for perfect same-view day and night video capture.



Two Cameras In One

Dual-lens system captures two different views simultaneously and requires only a single PoE cable connection.

Technical Data

Technical Data			
Models	IT, Sec, Sec-Pano, Sec-Night-Pano, Sec-180, Sec-Night-180, Sec-DNight-FIX	Lens Options	L20 to L160, 180° version (panorama), DNight-FIX version with parallel Day/Night lenses
Image Sensors	1/1,8" CMOS (6MP)	Sensor Resolution	6MP: 3072x2048 pixels (Color/B&W)
Max. Frame Rate (MxPEG)	MEGA/HD: 30 fps, QXGA: 15 fps, 6MP: 8 fps (2x 6MP: 4 fps)	Compression	MxPEG, M-JPEG, JPEG, H.264 (SIP video only)
DVR Recording	Internal: microSD Card External: PC/NAS (to 4 TB)	Audio	Integrated microphone & speaker, VoIP, intercom, sound recording
Operating Conditions	IP65, IK10, IK10+ optional, -30 to +60 °C/-22 to +140 °F	Internal Sensors	Temperature, PIR, microphone illumination, shock detector
Image Processing	MxActivitySensor, VMD, image correction, backlight	Software (free of charge)	MxManagementCenter, MxControlCenter, MxEasy, MOBOTIX App

D15D – Individual Lens Selection

The standard models of the D15D stand out in particular as they allow to combine image sensors and lenses as required. In fact, we provide a choice of 18 different variations of lenses and image sensor combinations. To see the range of D15D lens options, go to page 65.



LEFT Sensor

RIGHT Sensor

High-Security Dual-Lens Camera.

Constructed from 5 mm stainless steel, the V15D is a bullet-resistant corner-mounted IP dual-lens camera designed for monitoring potentially volatile conditions. Made for high-security locations such as military sites, prisons and embassies or extreme environmental conditions.

V15D – Bullet-Resistant For High-Risk Installations

The V15D is the most sturdy MOBOTIX camera to-date. Specifically designed for high-risk areas, it offers unmatched protection against attacks. Nonetheless, it's still a camera with MOBOTIX technology and the full array of possibilities to connect external sensors and actuators. Take GPS support for mobile installations, for example. Just add the GPS-Box to the top of an armored car and connect it to the MxBus port of the V15D.



With S15D Technology

Hidden inside the V15D is an S15D core unit and two sensor modules, so of course it includes the range of features and lens options available within the S15D (except Hemispheric). Includes 2-way audio thanks to integrated microphone and speaker.



Armor-Plating

The outer housing is designed for corner-mounting and is constructed from 5 mm stainless steel plating that will deflect bullets fired from a handgun.



Versatile Installation

The V15D comes in two models. One has a parallel alignment of two sensor modules for perfect same-view day and night video capture. The other model includes one lens facing forward, the second lens facing down to avoid blind spots.

Technical Data

Technical Data			
Models	Sec, Sec-Night, Sec-DNight	Lens Options	Sensor modules L20 to L160
Image Sensors	1/1,8" CMOS (6MP)	Sensor Resolution	6MP: 3072x2048 pixels (Color/B&W)
Max. Frame Rate (MxPEG)	MEGA/HD: 30 fps, QXGA: 15 fps, 6MP: 8 fps (2x 6MP: 4 fps)	Compression	MxPEG, M-JPEG, JPEG, H.264 (SIP video only)
DVR Recording	Internal: microSD Card External: PC/NAS (to 4 TB)	Audio	Integrated microphone & speaker, VoIP, intercom, sound recording
Operating Conditions	IP65, bullet-proof, IK10+ -30 to +60 °C/-22 to +140 °F	Internal Sensors	Temperature, microphone illuminati- on, shock detector
Image Processing	MxActivitySensor, VMD, image correction, backlight	Software (free of charge)	MxManagementCenter, MxControlCenter, MxEasy, MOBOTIX App
Lens Protection	3 mm special glas	Housing	5 mm stainless steel

V15D – Modularity Guarantees High ROI

Based on the modular S15D platform, the V15D allows using almost the same range of sensor modules (except for the Hemispheric modules). This means that you can use two Day, Night and Night-LPF sensor modules and even exchange them later on. To see the range of V15D sensor module options, go to page 62.



The ceiling-mounted c25 delivers two 180° panorama images of a room

Indoor Ceiling Camera. Easy To Install.

With a diameter of only 12 centimeters and a weight of approximately 200 grams, the c25 is the smallest and lightest hemispheric MOBOTIX video complete system for fast ceiling mounting in protected indoor areas. Features include a light-sensitive 5-megapixel day or night sensor and MxAnalytics. Features all functions like the traditional Q25 outdoor camera.

20

from €398



Two Models Available

The c25 is available as a hemispheric camera (L12, 180° panorama) to capture an entire room and with an L23 lens (92°), for example, to monitor the area around a cash register. Longer lens holder to support other lenses than hemispheric.



Original MOBOTIX Hemispheric Technology

Unlike the devices of other manufacturers, hemispheric distortion correction in a MOBOTIX system takes place in the camera and not later on the computer using separate video management software. This drastically reduces the image data that needs to be transferred and saved.



Typical Application Areas For The c25

Indoor applications in retail, supermarkets, public buildings, trade fair and exhibition spaces, hotels and recreation facilities, in residential buildings and for the surveillance of industrial production processes.



Simple Installation In Suspended Ceilings

The c25 can be easily installed using a standard drill bit (105 mm in diameter) in suspended ceilings. The c25, which is connected to an Ethernet cable, is simply slotted in from below using raised spring clips and automatically secured in place.

Technical Data

Models	Day lens – color, Night lens – B&W	Lens Options	L12 (180° x 160°), L23 (92° x 68°), others optional
Image Sensors	1/2,5" CMOS (5MP)	Sensor Resolution	Color: 2592x1944 pixels Black & White: 2592x1944 pixels
Max. Frame Rate (MxPEG)	MEGA/HD: 30 fps, QXGA: 15 fps, 5MP: 10 fps	Compression	MxPEG, M-JPEG, JPEG, H.264 (SIP video only)
DVR Recording	Internal: microSD Card External: PC/NAS (to 4 TB)	Audio	VoIP, sound recording using integrated microphone
Operating Conditions	IP20, 0 to +40 °C/+32 to +104 °F	Internal Sensors	Temperature, microphone, illumination, shock detector
Image Processing	MxActivitySensor, VMD, image correction, backlight, MxAnalytics	Software (free of charge)	MxManagementCenter, MxControlCenter, MxEasy, MOBOTIX App

New MOBOTIX Indoor Camera Line

MOBOTIX offers the i25 and c25, two highly compact, discreet IP cameras for use indoors that deliver a wide range of features (for example, MxAnalytics video analysis tools). Matching accessories such as radar and surge protection modules are already in the works.



Wall-mounted i25 captures 180° field of view – no blind spots.

Indoors. Compact. Allround Secure.

The hemispheric camera for indoors delivers a high-resolution 180° panorama image with no blind spots. Easily replacing four standard CCTV cameras, just one i25 captures an entire room, wall-to-wall. The newly-designed wall mount form factor blends in with any environment.

i25 – The Perfect Overview

The MOBOTIX i25 is an indoor-only wall-mountable Hemispheric camera providing an allround view with just one lens. Only one camera is needed to view an entire room. The i25 can be mounted onto any indoor surface blending seamlessly into the surroundings.



Lens tilted down 15 deg.

Blends In

The i25 can be mounted onto any surface on a wall. The small form factor blends in with any environment. Fast installation with optional in-wall mounting kit.



Captures An Entire Room

The wall-mountable i25 captures an entire room with stunning wall-to-wall view, without any blind spots. Virtual PTZ on the live and recorded images is performed by the camera.



Image Correction Built-in

All of the image correction in the MOBOTIX Hemispheric cameras is handled by the camera's on board imaging analysis software. No additional PC or software required.



Day Or Night Capture

Available in both Day (color) and Night (B&W) models, which caters to the most challenging lighting conditions and a wide range of applications.

Technical Data

Models	Day lens – color, Night lens – B&W	Lens Options	L12 (180° x 160°), L23 (92° x 68°), others optional
Image Sensors	1/2,5" CMOS (5MP)	Sensor Resolution	Color: 2592x1944 pixels Black & White: 2592x1944 pixels
Max. Frame Rate (MxPEG)	MEGA/HD: 30 fps, QXGA: 15 fps, 5MP: 10 fps	Compression	MxPEG, M-JPEG, JPEG, H.264 (SIP video only)
DVR Recording	Internal: microSD Card External: PC/NAS (to 4 TB)	Audio	VoIP, sound recording using integrated microphone
Operating Conditions	IP30, 0 to +40 °C/+32 to +104 °F	Internal Sensors	Temperature, microphone, illumina- tion, shock detector
Image Processing	MxActivitySensor, VMD, image correction, backlight, MxAnalytics	Software (free of charge)	MxManagementCenter, MxControlCenter, MxEasy, MOBOTIX App

Accessory Options

MOBOTIX offers an optional surface-mount-set (€28) for the i25. The detachable MX-Bus-IO-Modul is an extension of the system accessories for the indoor camera line. Connected to a MOBOTIX indoor-camera, the module with 2 self-powered inputs and 2 outputs allows to access MX-Bus and the connection of external sensors or the switching of relays.





reddot design award



With Vandalism Set

**Weatherproof
Outdoor Design**



Wall-mounted Q25M captures 180° field of view – no blind spots.

Elegant. Allround Secure.

Setting a new benchmark in design, this all-in-one Hemispheric camera offers a super-wide 360° allround view, in high resolution. Easily replacing four standard CCTV cameras, just one Q25M captures an entire room. The Q25M is highly discreet and fits in everywhere – both indoors and outdoors.

Q25M – The Perfect Overview

The Q25M provides a Hemispheric 360° allround view with just one lens. Only one camera is needed to view an entire room. Using the in-ceiling mount option, the Q25M can be flush-mounted into a ceiling so that it blends elegantly into the surroundings.



Fits In Everywhere

The Q25M can be flush-mounted into a wall or ceiling, and looks more like a mounted speaker than a security camera. The low-profile form factor fits in with every environment (pictured with in-ceiling mount set).



Captures An Entire Room

Just one Q25M can capture an entire room. When wall-mounted, it captures a stunning 180° wall-to-wall view, without any blind spots. Virtual PTZ on the live and recorded images is performed by the camera.



Image Correction Built-in

All of the image correction in the MOBOTIX Hemispheric cameras is handled by the camera's on-board imaging analysis software. No additional PC or software required.



Day Or Night Capture

Available in both Day (color) and Night (B&W) models, which cater to the most challenging lighting conditions and a wide range of applications.

Technical Data

Models	Sec, Basic	Lens Options	L12, L25
Image Sensors	1/2, 5" CMOS (5MP)	Sensor Resolution	Color: 2592x1944 pixels Black & White: 2592x1944 pixels
Max. Frame Rate (MxPEG)	MEGA/HD: 30 fps, QXGA: 15 fps, 5MP: 10 fps	Compression	MxPEG, M-JPEG, JPEG, H.264 (SIP video only)
DVR Recording	Internal: microSD Card External: PC/NAS (to 4 TB)	Audio	Integrated microphone & speaker, VoIP, intercom, sound recording
Operating Conditions	IP65, IK06, IK10 optional, -30 to +50 °C/-22 to +122 °F	Internal Sensors	Temperature, microphone, illumination, shock detector.
Image Processing	MxActivitySensor, VMD, image correction, backlight, MxAnalytics	Software (free of charge)	MxManagementCenter, MxControlCenter, MxEasy, MOBOTIX App.

MOBOTIX Panorama Image Technology

Unlike competitors, hemispheric distortion correction takes place in the MOBOTIX camera and not later on the computer. This drastically reduces the image data before it is transferred and saved. This "decentralized" MOBOTIX solution lowers the volume of network traffic and allows dozens of hemispheric cameras to be displayed on a computer or smartphone.

D25M Dome Camera

Weatherproof



With Vandalism Set



Traditional Design. Innovative Technology.

Bringing unprecedented technology and video performance to a traditional dome camera form factor. The MOBOTIX D25M offers the same advanced engineering and innovative technology of all the MOBOTIX cameras.

D25M – Compact, Cost-Efficient And With High Resolution

This weatherproof dome camera is the right choice for sites requiring a traditional dome form factor. The in-ceiling mount provides a low profile for discreet surveillance.



Traditional Yet Innovative

Beneath the traditional dome interior is a powerful VMS-enabled hardware platform with decentralized recording management and a 5MP image sensor for high-quality video capture.



In-Ceiling Mount

The in-ceiling mount kit allows the D25M to be mounted into a ceiling tile for a low-profile dome installation that blends into the surrounding environment.



Vandalism Set

Protect your camera investment with this toughened vandalism set comprised of a high-tensile stainless steel outer ring and a 3 mm polycarbonate dome. All vandalism sets have an IK10 impact rating.



Intercom Expansion

By combining the D25M with an ExtIO (see page 56), you can create a powerful 2-way intercom system that integrates seamlessly with your PC, Mac or iOS devices.

Technical Data			
Models	Sec, IT, Basic	Lens Options	L25 to L160
Image Sensors	1/2,5" CMOS (5MP)	Sensor Resolution	Color: 2592x1944 pixels Black & White: 2592x1944 pixels
Max. Frame Rate (MxPEG)	MEGA/HD: 30 fps, QXGA: 15 fps, 5MP: 10 fps	Compression	MxPEG, M-JPEG, JPEG, H.264 (SIP video only)
DVR Recording	Internal: microSD Card External: PC/NAS (to 4 TB)	Audio (ExtIO required)	Integrated microphone & speaker, VoIP, intercom, sound recording via ExtIO
Operating Conditions	IP65, IK06, IK10 optional, -30 to +50 °C/-22 to +122 °F	Internal Sensors	Temperature, illumination, shock detector
Image Processing	MxActivitySensor, VMD, image correction, backlight, MxAnalytics	Software (free of charge)	MxManagementCenter, MxControlCenter, MxEasy, MOBOTIX App

D25M – Well Designed

All D25M models come with a robust 1.5 mm polycarbonate dome. An extensive range of mounting accessories is also available for expanding device functionality, so that the camera can be installed anywhere.

M25M Allround Camera



Tough. For Any Environment.

Designed and engineered to withstand the most demanding of conditions, featuring high tolerance and an IP66 rating. The M25M features the 5MP technology and is highly adaptive in where it can be deployed thanks to the wide choice of lenses available.

M25M – The Robust Allrounder

The cost-effective and professional single-lens camera solution with exchangeable lenses for indoor and outdoor use. The lenses can be freely selected: from Hemispheric through Super Wide Angle to Telephoto lens, CSVario adjustable lens and Long Pass Filter for license plate capture.



Fast, Cost-Effective Installation

The M25M ships as a complete kit, including wall & ceiling mounts and other mounting accessories. As with all MOBOTIX cameras, no additional software, housings or cooling/heating fans required.



Tough Design

The M25M is built tough, with an IP66 weatherproof rating, it can withstand extreme temperatures and the harshest of conditions. The fibreglass re-inforced outer housing is designed for long life.



2-Way Audio

Like the other MOBOTIX cameras, the M25M has built-in VoIP functionality for 2-way lip synchronous audio/video via IP phones and mobile devices.



Powerful 320 mm Telephoto Capture

It is possible to identify license plates and people even at distances of more than 70 meters thanks to the L320 lens that can be used with the M25M and the high-resolution 5MP sensor.

Technical Data

Models	Sec, Sec-CSVario, IT	Lens Options	L12 to L320 CSVario 24 to 54 mm
Image Sensors	1/2,5" CMOS (5MP)	Sensor Resolution	Color: 2592x1944 pixels Black & White: 2592x1944 pixels
Max. Frame Rate (MxPEG)	MEGA/HD: 30 fps, QXGA: 15 fps, 5MP: 10 fps	Compression	MxPEG, M-JPEG, JPEG, H.264 (SIP video only)
DVR Recording	Internal: microSD Card External: PC/NAS (to 4 TB)	Audio	Integrated microphone & speaker, VoIP, intercom, sound recording
Operating Conditions	IP66, -30 to +50 °C/-22 to +122 °F	Internal Sensors	Temperature, microphone, illumination, shock detector
Image Processing	MxActivitySensor, VMD, image correction, backlight, MxAnalytics	Software (free of charge)	MxManagementCenter, MxControlCenter, MxEasy, MOBOTIX App

MOBOTIX CSVario Lens For Flexible Installations

The M25M-Sec-CSVario is shipped with a CS mount, a compact 1/2" Vario lens (manually adjustable image angle), and an optional color or black & white sensor (day/night).

MX-OPTCS-L24-54



S15M FlexMount Camera



The S15M is a single-lens Hemispheric video device that mounts discreetly behind surface panels.

Sees Everything. Is Hard To See.

Never before has so much power and functionality been incorporated into such a tiny form factor. The camera features 5MP Hemispheric video technology for discreet integration into housings and devices, behind walls or ceiling panels.

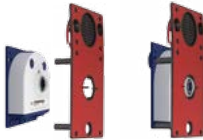
S15M – Low Light, No Problem

The maximum resolution of the color and B&W sensors is 5 megapixels. Thanks to the new color sensors that feature higher light sensitivity, it is now often possible to use MOBOTIX day cameras with color image sensors around the clock, even under low light conditions.



Hemispheric Video

Capturing a super-wide 180° field of view, the S15M captures everything wall-to-wall. The Hemispheric image correction is handled by the camera, no additional software required.



Door Station

The optional AudioMount turns the S15M into an IP Video Door Station. The built-in speaker and microphone integrates with the S15 VoIP functionality, allowing 2-way communication.



Discreet

The compact design allows for installation into small spaces and cavities. When flush-mounted behind a wall or ceiling panel, only the camera's lens is visible.

Technical Data

Technical Data			
Models	Sec, Sec-Night	Lens Options	L12 (180° x 160°) prefitted
Image Sensors	1/2,5" CMOS (5MP)	Sensor Resolution	Color: 2592x1944 pixels Black & White: 2592x1944 pixels
Max. Frame Rate (MxPEG)	MEGA/HD: 30 fps, QXGA: 15 fps, 5MP: 10 fps	Compression	MxPEG, M-JPEG, JPEG, H.264 (SIP video only)
DVR Recording	Internal: microSD Card External: PC/NAS (to 4 TB)	Audio	2-way VoIP available with AudioMount or external microphone & SpeakerMount
Operating Conditions	IP65, IK06, -30 to +60 °C/-22 to +140 °F	Internal Sensors	Temperature, illumination, shock detector
Image Processing	MxActivitySensor, VMD, image correction, backlight, MxAnalytics	Software (free of charge)	MxManagementCenter, MxControlCenter, MxEasy, MOBOTIX App.

S15M – One Camera Replaces Four

Like the Q25M, the S15M is a Hemispheric camera that can display four different viewing angles on the monitor, from a single lens. Each of the four views has a virtual PTZ function and can be adjusted separately.

Hemispheric IP Video Door Station



Figure shows complete kit.

The World's Most Advanced Door Station.

This modular IP Video Door Station, one of its kind anywhere, offers a combination of 5MP Hemispheric technology and integrated VoIP/SIP to provide full access control and a two-way video communication option – at home or via a mobile app while on the go.

from €1,298

Advanced IP Video Intercom Technology

Most video door stations are designed around analog TV technology. Such systems can only deliver very low image quality with limited 2-way communication. The new IP Video Door Station from MOBOTIX is based on the most up-to-date technology, incorporating megapixel Hemispheric video, RFID keyless access, digital voice messaging with seamless smart phone and PC access.



Hemispheric Video

Capturing a super-wide 180° field of view, the T25M camera module captures everything wall-to-wall for secure viewing and recording. The Hemispheric image correction is handled by the camera, no external PC required. The in-camera image correction saves bandwidth by up to 70%.



Instant 2-Way Communication – From Anywhere!

SIP/VoIP built-in for instant 2-way intercom communication. If the bell button is pressed, the camera records and a phone call or message can be sent directly to your PC, mobile or phone. A conversation can be initiated with the visitor, from wherever you are in the world.



Secure Access With RFID And Messaging

With the door station modules, keyless RFID and PIN access can be added to ensure secure door entry at all times. Visitors can leave voicemails and message retrieval is done instantly locally or remotely.

Technical Data

Models	Sec, Sec-Night	Lens Options	L12 (180° x 160°) prefitted
Image Sensors	1/2,5" CMOS (5MP)	Sensor Resolution	Color: 2592x1944 pixels Black & White: 2592x1944 pixels
Max. Frame Rate (MxPEG)	MEGA/HD: 30 fps, QXGA: 15 fps, 5MP: 10 fps	Compression	MxPEG, M-JPEG, JPEG, H.264 (SIP video only)
DVR Recording	Internal: microSD Card External: PC/NAS (to 4 TB)	Audio	Integrated microphone & speaker, VoIP, intercom, sound recording
Operating Conditions	IP65, IK06, -30 bis +50 °C	Internal Sensors	Temperature, microphone, illumination, shock detector.
Image Processing	MxActivitySensor, VMD, image correction, backlight, MxAnalytics	Software (free of charge)	MxManagementCenter, MxControlCenter, MxEasy, MOBOTIX App.

Hemispheric IP Video Door Station – Simple And Cost-Effective Installation

The MOBOTIX IP Video Door Station can be connected and supplied with power via a standard network cable (PoE), or – thanks to the Mx2wire+ technology – via standard wiring such as bell wire, antenna cabling or coax.

Door Station Modules



T25M-CamCore

With a super-wide 180° field of view, the T25M camera module captures everything wall-to-wall. Includes programmable buttons for activating lights and a bell. Hemispheric image correction is handled by the camera, no additional software required. Built-in VoIP/SIP for instant 2-way communication via PC or mobile device.

Available in two models, MX-T25M-Sec-D12 and MX-T25M-Sec-N12

from €798



BellRFID

The weatherproof BellRFID module provides keyless entry, voice mailbox control and is available with any one of six available bell button sets. The bell button sets are customizable and can be exchanged at any time. The module allows visitors to record messages, which residences can play back locally or remotely. Includes mailbox feature, 1 admin and 5 user RFID cards.



Available with six different button sets, MX-Bell1-Button-F1/F2/F3/F4/O5/XL1

from €298



KeypadRFID

The weatherproof KeypadRFID module provides keyless entry and voice mailbox control. The modules allow visitors to record messages, which residences can play back locally or remotely. Includes 1 admin and 5 user RFID cards.

MX-Keypad1-EXT-PW

from €298

Modular System

MOBOTIX offers a varied selection of modules, which can be upgraded and interchanged within the door station at any time. All door station modules are fully weatherproof (IP65, except MX-DoorMaster). Choose from a range of 5 colors, see product color codes on page 35.

Free-of-charge printing for Info Module and BellRFID module: www.mobotix.com > Support > Printing Service



Info Module

This weatherproof backlit display for showing an address or logo can be ordered with or without Mx2wire+ technology. When optioned with Mx2wire+, Ethernet cabling is not required, as the Mx2wire+ technology converts existing 2-wire telephone or electrical cable into a 10/100 PoE network.

Available in two models, MX-2wirePlus-Info1-EXT And MX-Info1-EXT.

from €98



Frames And Housings

All of the door station modules require a frame and housing for the purpose of wall mounting. Frames are available for in-wall and on-wall mounting. Includes unique anti-theft system for device security.



Different frames available for on-wall and in-wall mounting

from €18



MX-DoorMaster

This internal security door opener includes door access battery backup and encrypted security for the door access codes, to prevent unauthorized access. Compatible with standard door openers (6 to 12 V AC, 24 V AC/DC) using an external power supply. Available in white only.

In-wall: MX-Door2-INT-PW

On-wall: MX-Door2-INT-ON-PW

€248

The T25M And Door Station Modules Are Available In 5 Colors



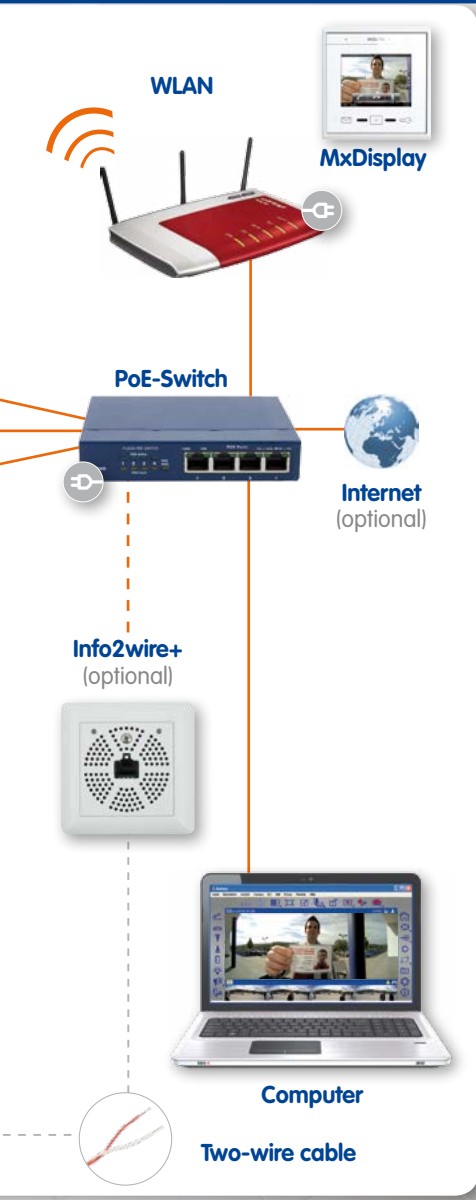
Easy Installation



Complete Panorama View. No Blind Spots.

The T25M core module is equipped with a Hemispheric lens and a 5-megapixel image sensor allowing monitoring of an entire entrance area, capturing a complete 180° Panorama view from wall to wall and floor to ceiling.





Fast, Cost-Effective Installation

Existing doorbells and intercoms can be replaced with a MOBOTIX Door Station, because it's an end-to-end solution that can be installed anywhere, even if there is no existing network infrastructure, using Mx2wire+. Any number of additional video and access devices can be integrated to create a door access control solution that can be controlled from any location.

Hemispheric IP Video Door Station – Simple Setup

The outdoor station requires just one cable for data and power to be connected to a PoE switch and thereby to any expandable Ethernet network. The T25M core module is also fitted with an internal MicroSD storage for convenient on-board storage, or alternatively can record to networked storage (NAS or PC).

RFID Card Access Control



MxDisplay available in black and white

Building Automation Server With Touchscreen Display For Viewing & Device Management.

MxDisplay is a wall-mountable Building Automation Server with touchscreen display, incorporating WiFi and RFID functionality. From this central glass console, you can add and configure all MOBOTIX devices. Multiple MxDisplays can be wirelessly connected, each being powered via PoE.

38

€598

Smart Phone On The Wall

MxDisplay is often referred to as a "smart phone on the wall" because it can be operated using swipe and zoom gesture control, just like a smart phone. With a few swipes, the user can see an overview of several cameras, retrieve the latest video messages or create a new access transponder card for a visitor.

Touchscreen Viewing Station for the IP Video Door Station

MxDisplay serves as a wall-mountable remote viewing station for the MOBOTIX IP Video Door Station and cameras. Here are just a few of the many features available within the display:

Instant Live View & Access



Control of multiple Door Stations and cameras via a single MxDisplay.

Quick Event Overview



MxDisplay tells at one glance what and how many events were recorded.

Playback Messages & Alarm Events



Finger-swipe scrolling through recorded video clips.

Access & Device Configuration



Central management of cameras and access control systems.

Additional MxDisplay Features

- Full control of your lighting, heating, blinds, camera and alarm system
- Doors can be unlocked with the press of a button
- Excellent voice transmission quality thanks to HD wideband audio codec (G.722)

100%
incl.

For PC/Mac/Linux



Single and multi-site management, allowing video wall setup for large-scale control room monitoring.

The New Milestone of Video Management

MxManagementCenter (MxMC) the new video management software is a complete new development from scratch that focuses on a unique and intuitive user experience. MxMC is perfectly designed in combination with MOBOTIX cameras representing the decentralized concept at its best. Following the MOBOTIX software concept, MxMC is 100 % included in the MOBOTIX product offering, requiring no extra software, license or update costs and at the same time having no limits in terms of users, screens and cameras.

40

100% included

Different Platforms and Standards

MOBOTIX is offering one of the most competitive and user friendly VMS Solutions, running on PC, MAC and Linux. MxMC is also open to interact with H264/ONVIF compatible cameras in the future.

Intuitive Layout View – Cameras and Groups

MxMC helps users to manage huge amount of cameras by sorting and structuring devices into groups and different layout views. MxMC is structured in 4 major areas:

1. Group or camera bar

Perfect preview of all available cameras and groups.

2. Layout area supporting grid, graphic and info view

Major display area for grid layout including focus and grid windows, graphic view supporting intuitive layout constructions with symbols and background images as well as an information screen where support, emergency or and additional project information is displayed. All 3 views can be toggled and selected with a single click.

3. Intelligent event bar

Chronological preview of all recordings and events. The complete bar can be suppressed or displayed. All previews can be directly selected or filtered and sorted by cameras and type of events. With Drag&Drop every recording can be moved into focus window for live view or player view for deeper analysis. Vice versa, complete groups or selected cameras can be dragged into the event bar for event research.

4. Command bar

Includes all buttons for different views, player and research, history, layout editing, management and control functions.



Fastest Learning Curve

MxMC does not need a huge user manual or other heavy documentation to get started. MxMC will provide one of the fastest learning curve in the market of VMS.

MxManagementCenter

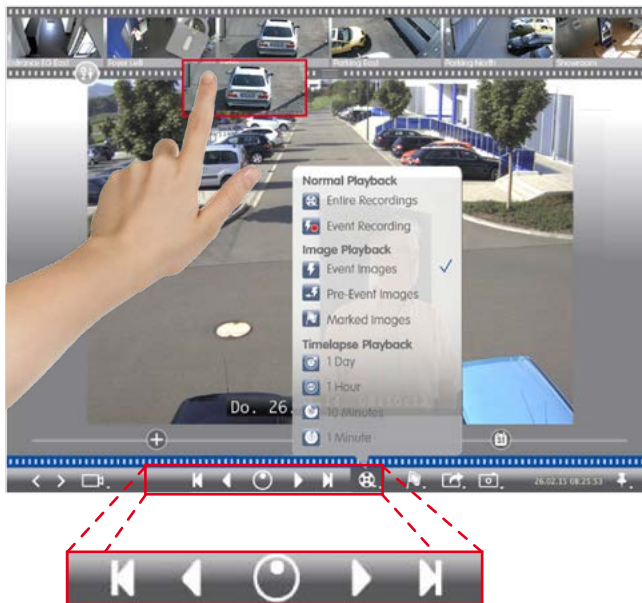
MOBOTIX Power Player Technology

MxMC includes different player and research tools to provide fastest results on events and recordings, comfortable research and in-depth analysis.

Research Player allows High-Speed rewind and fast forward for “on-the-spot” and “Jog (Dial)” search with speeds of up to 16 times. Efficient time laps provides extremely fast results even during longer history periods with selectable steps from minutes up to days. Search and analysis can be conducted by time, date or range. Investigations across all cameras can be arranged by reference time with the pin symbol.

Another powerful research tool is the so-called **Grid Player** where all cameras are placed into player mode, showing all recordings synchronized with the search criteria of the camera in the focus window.

Another big innovation is the MOBOTIX **Instant Player**, providing immediate access to the last 25 events in every live view of a camera without changing the layout view. This new Instant Player gives “on-the-spot” access to camera recordings everywhere and is the perfect tool for immediate results and fastest reaction time.



MOBOTIX Hemispheric Dewarping

MxMC is able to dewarp hemispheric fisheye views, supporting keyboard, mouse, trackpad and joystick to allow easiest and fastest tracking.

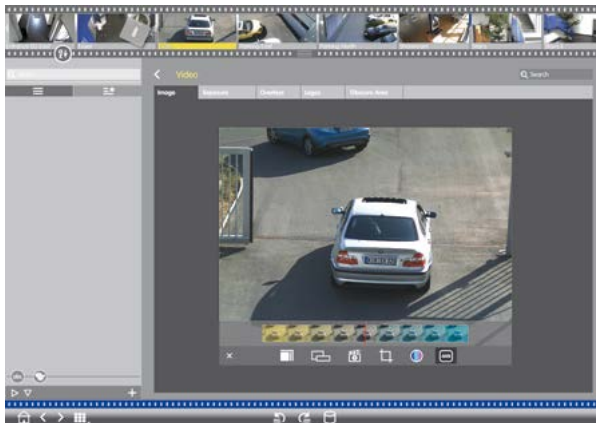
Adaptive Bandwidth Management

MxMC is perfectly designed in combination with MOBOTIX products, supporting the decentralized concept in all aspects. MxMC is able to handle different predefined scenarios, which can be defined by the user depending on the available bandwidth. This feature is ideal for mobile devices like laptops which are used in different locations (home with remote, office with direct LAN connection) without any network or bandwidth configuration necessary.

The fully intelligent MOBOTIX cameras are able to manage frame rates and image resolution, depending on the available bandwidth. In this way LoRes images are transferred via a small bandwidth connection, but stored in full resolution and high details on the local storage, managed by the camera. In the case more details are required, the user can define the area of interest down to the maximum resolution provided by the camera. In this way MxMC in combination with MOBOTIX cameras can make the best usage of available bandwidth and enables quality research even via low bandwidth connections.

Intelligent Configuration Management

MxMC includes a complete user interface to manage all parameters of all MOBOTIX products. No web browser is required in the future. MxMC provides a sorted overview of all devices and parameters and supports visual control and Drag&Drop configuration of cameras and complete groups. Furthermore MxMC supports intelligent parameter sorting and verification of configurations which will drastically reduce installation and configuration costs.



MOBOTIX Hyperlinks

MxMC is able to interact with 3rd party IP devices and supports the setup of hyperlink buttons to integrate devices like IOs or home servers and MxBus modules via MOBOTIX cameras.

MxManagementCenter

Multi-Monitor Capability

MxMC supports setup and arrangement of dual or multi-monitor installations without any extra Software costs. A simple double-click leads to the second monitor. Or MxMC is able to detect multiple monitors from different PCs in the network and can define target monitors for individual cameras or views. This is a perfect tool to setup and manage monitor wall systems in the most competitive and flexible way.



MOBOTIX Multi Slider - Major Selection Tool

MOBOTIX has revolutionized selection and control of parameters. With Multi Sliders, user is able to manage multiple parameters in one selection line. Multi Sliders are available in grid, graphics and player view as well as in all different research and configuration screens.

Multi Slider is the fastest selection tool to define image settings, zoom views, set aspect ratios or to filter events and cameras. Multi Slider buttons provide also "jump tags" via context menus for direct selection.



Power Player Technology

MxMC provides comfortable search & Analysis tools for fast results, "on-the-spot" Investigation and the fastest reaction time, representing the highest.

Highlights

- MxMC is 100 % included in the MOBOTIX product offering free of charge, with no license fees or update costs and available without any limits for users and cameras.
- The new MxMC is representing a unique user concept with a highly intuitive user interface and tools allowing the fastest learning curve without user manual.
- MxMC includes a new generation of player and research technologies for comfortable analysis and fastest investigation results in all views.
- MOBOTIX Multi Slider is the fastest selection tool for all kind of parameters, filter and sort functions.
- MxMC is supporting one of the unique features in the market, which is adaptive bandwidth management supporting quality search even over mobile networks with very limited bandwidth.
- MxMC supports easy setup and arrangement of dual or multi-monitor installations without any extra Software costs.
- MxMC includes graphical configuration management of all MOBOTIX camera products and devices. No interaction with web browser is required anymore in the future.
- With the integration of Hyperlinks, MxMC is able to interact with 3rd party IP devices and MxBus modules to manage complete alarm systems.
- Sophisticated user management to define detailed access rights to different users.
- Supports access to H264/ONVIF.
- Short latency from scene to screen thanks to MxPEG and high performance video decoding.

Highest Return of Investment

The unique concept of MOBOTIX Management Center (MxMC) and cameras provide the highest cost saver for users. No software costs, no license and update fees will generate the highest return of a future-proof investment.

MOBOTIX App

100% incl.

Compatible with the iPad, iPhone and iPod Touch.

Stay In Control While You're On The Go.

Turn your Apple iOS device into a mobile surveillance station with this feature-rich App from MOBOTIX. Now you can stay in constant contact with your MOBOTIX cameras from anywhere in the world. The App is compatible with the iPad, iPhone and iPod touch. Download it from the App Store today!

46

100% included

View Your MOBOTIX System From Anywhere

The MOBOTIX App provides instant access to your MOBOTIX surveillance systems via WiFi, 3G/4G connections. This free viewing client is compatible with all Apple iOS devices such as the iPhone, iPad and iPod Touch. MxApp works seamlessly with the video management software (VMS) in the MOBOTIX cameras.

Premium iOS Software

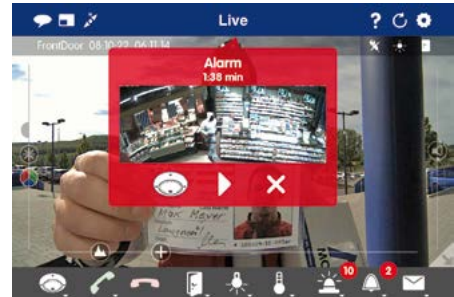
The MOBOTIX App offers advanced features, such as voice mailbox retrieval, camera grouping, event filtering and bandwidth optimization – no central DVR is required. The MOBOTIX App is fully compatible with the entire range of MOBOTIX cameras.

Instant Communication



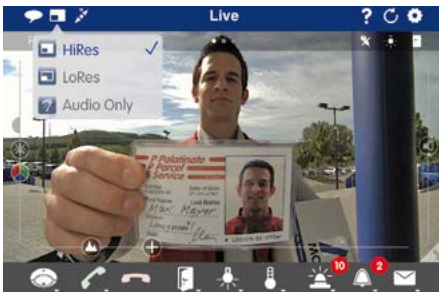
When a bell button is pressed or motion is detected, you are notified with a phone call.

Alarm Notification



If an alarm trigger occurs, the camera will start recording and sends an alarm message.

Bandwidth Optimization



Live video streaming is optimized automatically as you move between WiFi and mobile (3G/4G) networks while recording HighRes locally.

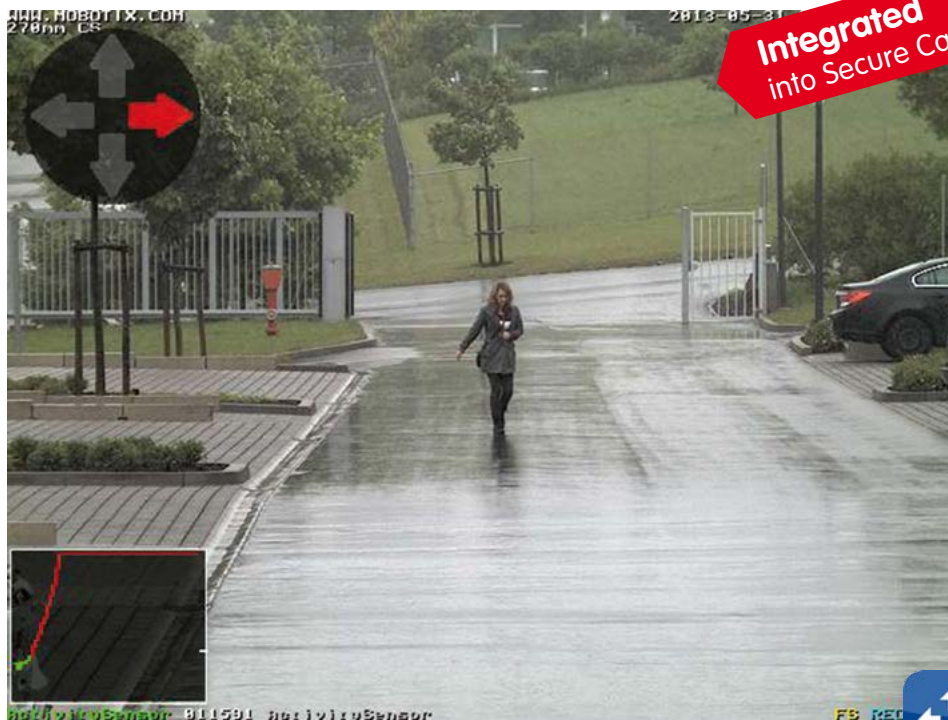
Fast Event Searching



Logical filtering for faster search and playback of recorded events.

Other Features

- Control external devices, such as doors/gates and switching lights on/off.
- All data communication is encrypted using an SSL connection.
- Receive instant notification of incidents, conveniently view and play back recorded events.



MxActivitySensor registers only traveling movement of people and objects in the scene, reducing false alarms.



Motion Detection Has Been Re-Invented!

MxActivitySensor is a revolutionary technology that only registers traveling movement of people and objects, while dismissing all redundant changes in the scene like shaking trees in the wind or moving camera poles. This drastically reduces the number of false alarms of more than 90 %.

48

100 % included

"MxActivitySensor is a completely new technology that is literally five years ahead of existing video motion detection systems. We believe it is a game changer and as with all MOBOTIX software, it is available for free."

Dr. Ralf Hinkel, MOBOTIX Founder

Game-Changing Technology

MxActivitySensor surpasses traditional motion detection for accurately detecting general human and vehicular activity. This revolutionary technology is years ahead of all other video motion detection (VMD) systems.

Decentralized Management

MxActivitySensor is managed by the camera. No central DVR required for the image analysis and alarm handling. This represents huge savings in bandwidth and software/hardware costs. MxActivitySensor is available in camera software version 4.1.6 and higher.

Single-Click Configuration

Enabling MxActivitySensor takes a single mouse click to self-configure and adapt to the scene, so there is no need for a specialist to do the configuration. Left at the default settings, it is more accurate than a complicated video motion detection setup.

Directional Alarming

Specific directions of movement (up/down/left/right) can be setup as relevant events that trigger an alarm for recording, phone call, activate alarm etc. This way, it is possible to capture movements going against the direction of traffic on a one-way street, for example.

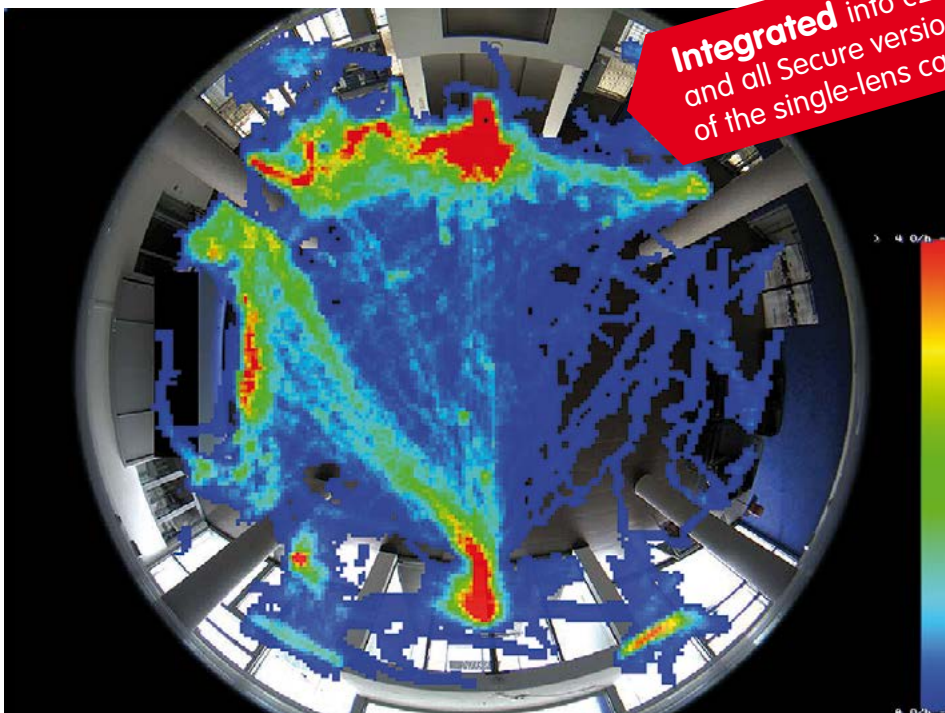
MxActivitySensor Detects Only What's Important



In this sequence, captured by a MOBOTIX camera during a storm, only the moving vehicle is registered, while changes in the scene such as trees swaying, water on the lens and lightning flashes, are all ignored. This world-first in-camera technology **can reduce false alarms in cameras located outdoor of more than 90 %**.

See MxActivitySensor In Action

To see a video demonstration of MxActivitySensor, go to www.mobotix.com > Products > MxActivitySensor. For detailed information relating to configuration and setup, please refer to the MxActivitySensor Compact Guide available at www.mobotix.com > Support > Media Library > Compact Guides.



Integrated into c25, i25
and all Secure versions
of the single-lens cameras

Heat map: The areas with the most movement are shown in red, and those with little movement in blue.

Camera-Integrated Video Analysis

MxAnalytics makes it possible to collect statistical behavior data on people and objects. This is done by defining recognition zones and counting corridors. The camera then records how often the object moved through each counting corridor within a specified time period. The most frequented areas are highlighted in color as a heat map. Best results with hemispheric cameras.

MxAnalytics – Highlights:

- Live analysis without network load, decentralized in the camera
- No additional devices like computers, servers or black boxes required
- Video analysis software available free of charge with no usage restrictions
- Also available free of charge for previously installed cameras via firmware update (MX-V4.3.2.45 or higher)

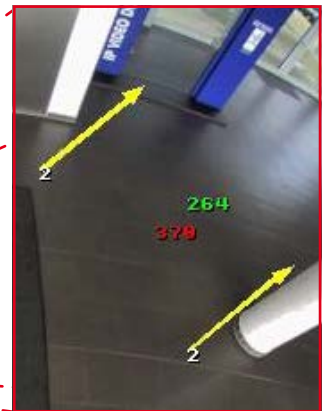
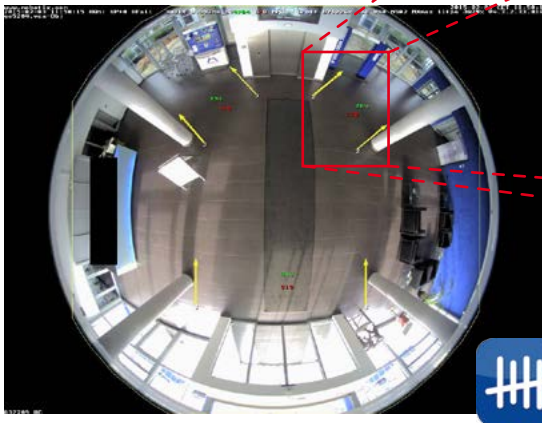
Visualize Highly Frequented Areas (Heat Maps)

Which shelves in the shop attract the most customers? Which paintings by the new artist hold the attention of the visitors most? Which waiting areas in the departure hall are preferred in the afternoon? To answer questions like these, all movements of objects of a particular size are recorded and evaluated, either in the live image or in a previously defined detection area. The frequency of the movements is shown visually by means of different colors in a heat map.

Count People Or Objects (Counting Corridors)

You can define counting corridors in the camera live image to find out, for example, how many people walk in and out of each entrance of a shop. The camera records how often each counting corridor is crossed within a specified period.

The enlarged image section shows a counting corridor of a reception area, indicated by two yellow arrows with a total of three counting corridors. Since the counting started, 264 objects crossed the corridor (green number) and 370 crossed in the opposite direction (red number).



- Easy configuration and intuitive operation for the user
- Automatic counting corridor and heat map reports
- Counting corridor solution can be configured to only count objects that move in a predefined direction
- Detection of unexpected movement patterns within defined areas

Weatherproof Interface Boxes



MX-Protection-Box

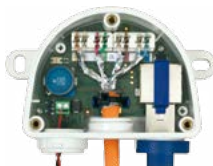
Protection-Box

This network protection box allows you to protect your MOBOTIX camera from damage caused by electrical surges of up to 4,000 volts that are triggered, for example, by voltage fluctuations, high-voltage loads and lightning strikes nearby. Used to establish an Ethernet connection using a MOBOTIX patch cable (RJ45) or via a single-wire terminal connector with an ETH installation cable.

MX-Overvoltage-Protection-Box-RJ45

MX-Overvoltage-Protection-Box-LSA

€48 each



MX-NPA-Box

NPA-Box, PoE-Injector

The Network Power Adapter (NPA) box is used to connect a camera to the network and supply power from external power supplies or batteries from **12 to 57 V DC**. Ideal for battery-powered mobile surveillance units.

MX-OPT-NPA1-EXT

€128



MX-GPS-Box

GPS-Box

GPS timer for MOBOTIX systems. Includes temperature and illumination sensors for outdoor use and an NTP time server for system synchronization. Tracking functions and alarms can be configured in the camera software based on position, speed, illumination and temperature. The box is connected via MxBus to a MOBOTIX camera.

MX-OPT-GPS1-EXT

€178



MX-Proximity-Box

Proximity-Box

Connected to a MOBOTIX camera via MxBus wires, this interface box enables motion detection with direction and distance detection up to max. 10 m (32 ft.) based on radar microwaves. It can be mounted behind walls (e.g. wooden, plastic, dry walls) and is a MOBOTIX alternative to PIR.

MX-OPT-PROX1-EXT

€128

NEW

Secure Installation Of Interface Boxes

All interface boxes are weatherproof (IP65, -30°C to +60°C/-22°F to +140°F) and feature a highly compact design (width: 8 cm). They can be mounted securely out of reach in the M15D and M25M VarioFlex wall mounts or in the D15D and Q25M/D25M wall mounts (see figure).






MX-Input-Box

Input-Box

Flexible camera sensor expansion by connecting up to six external sensors per box (for example, window and door contacts, light barriers etc.). The MX-Input-Box is a peripheral device that connects to the camera via MxBus and provides it with six galvanically isolated, self-powered inputs.

MX-OPT-Input1-EXT

€128



MX-Output-Box

Output-Box

Flexible system expansion with connection of up to eight peripheral devices per box (for example, power relay for lighting, garage door drive, blinds, etc.). In addition to the four MxBus terminals, the MX-Output-Box includes a total of eight signal outputs, of which six are self-powered (12 V DC, max. 10 mA per output) and two are potential-free.

MX-OPT-Output1-EXT

€128

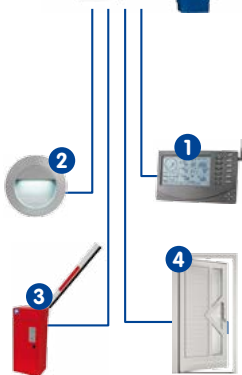


232-IO-Box

Expansion box for connecting external sensors and for switching external devices via MOBOTIX cameras; RS232 interface, connection to camera via MiniUSB or MxBus. Includes two galvanically isolated, self-powered signal inputs and two 12 V relay outputs. One 232-IO-Box can be connected to the camera's USB port and one to the camera's MxBus port to double the number of signal inputs and outputs.

MX-OPT-RS1-EXT

€148



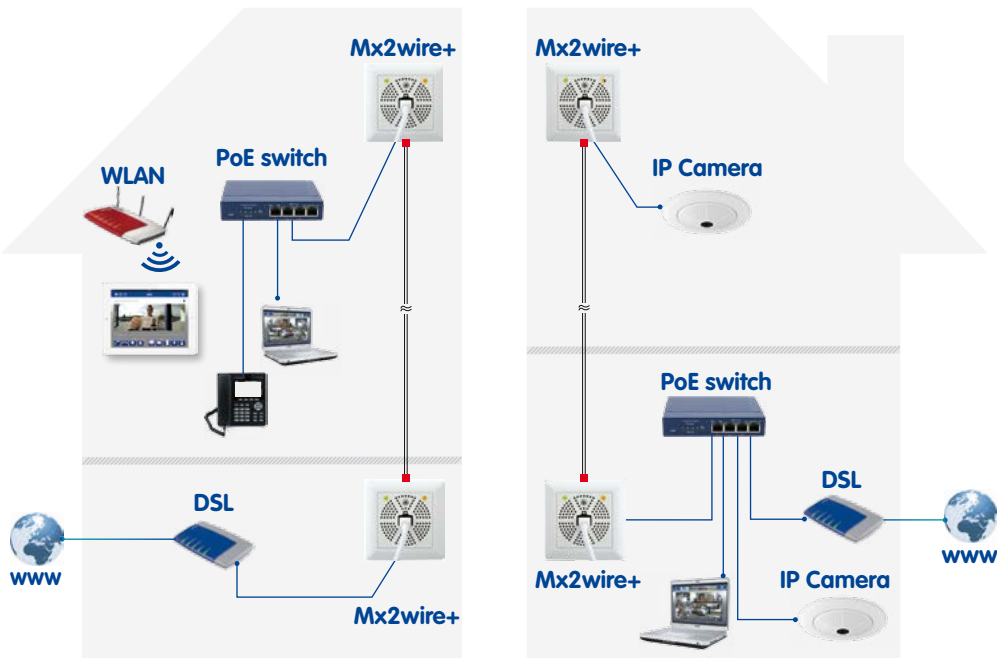
Sample connections:

- 1** RS232 devices like weather stations and pan/tilt heads
- 2 3** Lamp and electric door/gate control
- 4** Door and window sensors to trigger events

What Is MxBus?

The interface boxes are connected via MiniUSB or MxBus directly to a camera and are powered by it as well. MxBus is a MOBOTIX-developed, encrypted, two-wire bus system up to 100 m (109 yards) in length and is used to flexibly add new functions to a video system.

Mx2wire+ Media Converter



Mx2wire+ converts standard 2-wire cabling into a PoE network connection.

Convert Standard 2-Wire Cable Into PoE.

Mx2wire+ turns existing two-wire cabling into a powered Ethernet (PoE) network – quickly and cost-effectively. This means you don't need to have any Ethernet cabling installed to connect and network your IP cameras and PoE devices. All you need is Mx2wire+. Each Mx2wire+ kit includes two units.

Mx2wire+ – Saves On Installation Costs

Mx2wire+ can create a computer network via analog cabling such as an unused telephone line or antenna cable. The Mx2wire+ can be used to connect a computer, IP cameras and even the new IP Video Door Station intercom system. It will also power standard PoE devices.

Cost Savings

The significant benefit of Mx2wire+ is that, in addition to data connectivity, the power can also be transferred via the two-wire cable, to PoE devices such as MOBOTIX IP cameras, for example. This can literally save you thousands in cabling costs.

Extended Connection

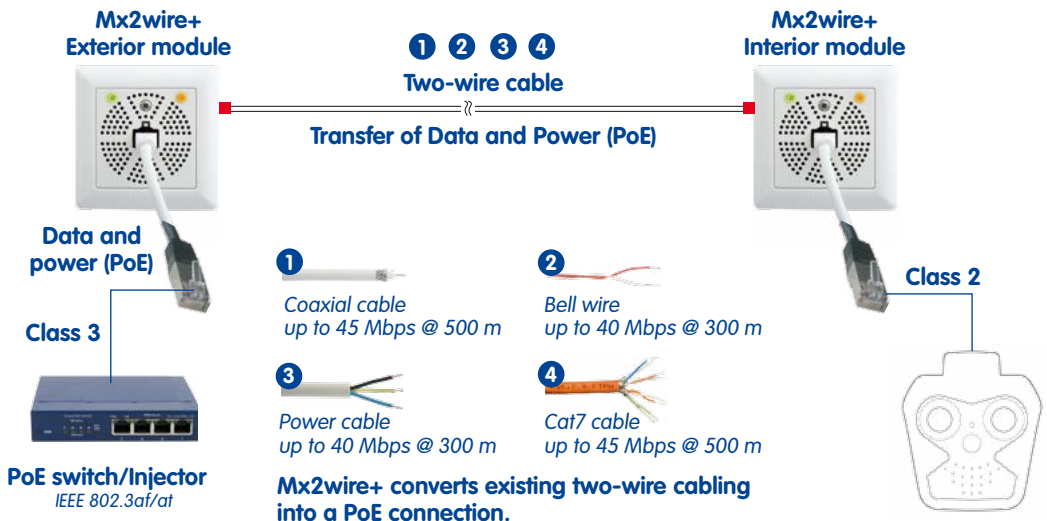
With the right cabling, Mx2wire+ can send video data at a distance of up to 500 meters; data rate up to 45 Mbps, depending on cable quality and distance.

Standards-Compliant

Connected devices are supplied with up to 13 watts via Power over Ethernet, which is compliant to the IEEE 802.3af standard.

Info2wire+ – Special Product Version For MOBOTIX IP Video Door Station

The optional Info2wire+ module for the IP Video Door Station can be combined with an Mx2wire+ unit. Helps to quickly establish the power supply via an existing phone line and to connect the door station to the network.



Mx2wire+ – Power Supply On Customer Requirements

Mx2wire+ requires a voltage supply by a standard PoE switch (class 0 or class 4, IEEE 802.3af/at) for its own consumption as well as for supplying power to the connected PoE end device. This can either be the NPA-PoE-Set by MOBOTIX or a DC power supply unit (48 to 57 V, 600 mA).

ExtIO Module



ExtIO Overview

Interfaces	USB, Ethernet 10/100 Mbps
Intercom	Microphone and speaker, integrated amplifier
Inputs	2 x galvanically isolated input contacts
Outputs	2 potential-free output contacts, safe extra-low voltage (AC/DC, max load 100 mA)
Sensors	<ul style="list-style-type: none"> – Passive IR motion sensor (PIR) – Temperature sensor – Illumination sensor – 2 programmable buttons
Status Display	Two status LEDs
Protection Class	IP65 (DIN EN 60529)
Operating Temperature	–30 to +60 °C/–22 to +140 °F
Power Supply	USB, Power over Ethernet (IEEE 802.3af; Class 2)
Wattage	typ. 1 W
Dimensions	diam. x H: 16 x 4.5 cm

Intercom Device With Sensors And Inputs.

The ExtIO module extends the functionality of your MOBOTIX camera, providing 2-way intercom communication via its in-built microphone and speaker. It also includes a passive infrared motion sensor, a temperature sensor and additional signal sensor. The two programmable buttons are ideally suited for activating camera functions and external electronic devices. The ExtIO can be connected to a MOBOTIX camera directly via USB or network switch.

MX-EXTIO

€198



ExtIO – Intelligent Technology For Combined Systems

The practical and functional ExtIO module can be easily combined with all MOBOTIX cameras and enables door and gate intercoms to be integrated with your MOBOTIX system.









PoE Injector To Power Your MOBOTIX Device.

- Powers all MOBOTIX cameras and PoE devices.
- Connects directly to standard mains power.
- Camera-to-PC connection without needing a switch.
- Can draw power from batteries (12 to 42 V DC).
- Powers any standard PoE (IEEE 802.3af) devices, such as VoIP phones, IP cameras etc.
- Connects to a PoE device using Ethernet cable.

MX-NPA-PoE-INT-Set

€98

NPA-PoE Set	
	Power Supply and Injector Universal power supply 24 V DC / 750 mA with exchangeable plug
	EU plug For operation in Europe
	UK plug For operation in UK
	US plug For operation in North America
	AUS plug For operation in Australia

Accessories	
	Cable for 12–24 V battery connection <ul style="list-style-type: none"> • Cable length 2.0 m / 6.56 ft • 1x RJ45 (injector) connector • 1x connector +/- (voltage source)

PoE Injector Overview	
Connectors	3x RJ45 (LAN/Power, PC/Power, camera)
Input	12 V to 42 V DC
Output	DC 48 V; PoE (IEEE 802.3af: PoE classes 1 to 3) 16 V input voltage or higher, PoE classes 1 and 2 (max. 6.49 W) at 12 V to 16 V
Deactivating	Less than 10 V input voltage
Operating Conditions	Indoor
Dimensions	L x W x H: 6 x 5.5 x 2.7 cm
Weight	about 40 g
Special Features	Integrated crossover for direct connection to PC; connection to power supply or battery 12 V or higher

Robust, Proven Power Supply For MOBOTIX Devices

The NPA-PoE Set is specifically designed for powering MOBOTIX devices. Our high-quality PoE injector includes three connection ports for network, camera/PoE device and computer.

Mount Selection Guide

M25M	M15D	S15D	D15D
			 
		€38 	€148  <i>In 5 colors</i> 
Ceiling/Wall Mount Included with camera	Ceiling/Wall Mount Included with camera	SurroundMount For long narrow spaces MX-FLEX-OPT-SM-PW	Vandalism Set Stainless steel and dome MX-D15-Vandal-ESMA
€78 	€78 	€38 	€148 
Pole Mount Mast or pole mounting MX-MH-SecureFlex-ESWS	Pole Mount Mast or pole mounting MX-MH-SecureFlex-ESWS	DualMount For day/night capture MX-FLEX-OPT-DM-PW	Wall Mount For D15D MX-WH-Dome
S15M		€32  <i>In 5 colors</i>	€98 
€48 	AudioMount MX-FLEX-OPT-AM-BL	HaloMount Discreet ceiling mount MX-HALO-EXT-PW	Corner/Pole Mount Fastening for wall mount MX-MH-Dome-ESWS
This mounting adapter allows the S15M to be attached to thin smooth surfaces (e.g. stainless steel plate) using an adhesive film on the rear of the AudioMount. Speaker and microphone included so that the AudioMount can provide full intercom functionality. Also compatible with the S15D.		€128  <i>In 2 colors</i>	
		€58 	
MX-OPT-IC	MX-FLEX-OPT-AM-BL	PTMount Adjustable dome mount MX-PTMount-OPT-PW	MX-WH-Dome

D25M	Q25M	IP Video Door Station	
		 <p>T25M KeypadRFID BellRFID InfoModule MxDisplay</p>	
<p>€98</p> <p>In 5 colors</p>  <p>IK10</p> <p>Vandalism Set Stainless steel and dome MX-D24M-Vandal-ESMA</p>	<p>€198</p> <p>In 4 colors</p>  <p>IK10</p> <p>Vandalism Set Stainless steel and dome MX-Q24M-Vandal-ESPO</p>	<p>€18</p>  <p>Single Frame Housing In-wall MX-OPT-Box-1-EXT-IN</p>	<p>from €48</p>  <p>Single Frame Housing On-wall MX-OPT-Box-1-EXT-ON-PW</p>
<p>€98</p>  <p>In-Ceiling Set In ceiling mounting MX-OPT-IC</p>	<p>€98</p>  <p>In-Ceiling Set In ceiling mounting MX-OPT-IC</p>	<p>€24</p>  <p>Double Frame Housing In-wall MX-OPT-Box-2-EXT-IN</p>	<p>from €58</p>  <p>Double Frame Housing On-wall MX-OPT-Box-2-EXT-ON-PW</p>
<p>€98</p>  <p>On-Wall Set Includes mounting parts MX-OPT-AP</p>	<p>€98</p>  <p>10° On-Wall Set Includes mounting parts MX-OPT-AP-10DEG</p>	<p>€28</p>  <p>Triple Frame Housing In-wall MX-OPT-Box-3-EXT-IN</p>	<p>from €68</p>  <p>Triple Frame Housing On-wall MX-OPT-Box-3-EXT-ON-PW</p>
<p>€98</p>  <p>Wall Mount for D25M/Q25M MX-OPT-WH</p>	<p>€98</p>  <p>Wall Mount for D25M/Q25M MX-OPT-WH</p>	<p>from €58</p>  <p>Single Frame with theft protection MX-OPT-Frame-1-EXT-PW</p>	<p>from €78</p>  <p>Double Frame with theft protection MX-OPT-Frame-2-EXT-PW</p>
<p>€98</p>  <p>Pole Mount Fastening for wall mount MX-OPT-MH</p>	<p>€98</p>  <p>Pole Mount Fastening for wall mount MX-OPT-MH</p>	<p>from €58</p>  <p>FlatMount Frame and in-wall housing MX-OPT-FlatMount-EXT-PW</p>	<p>from €98</p>  <p>Triple Frame with theft protection MX-OPT-Frame-3-EXT-PW</p>

S15D Mounts

DualMount



The DualMount houses two S15D sensor modules, for discreet day and night video capture. The sensor modules are angled downwards to avoid covering irrelevant areas such as ceilings or the sky. Designed for indoor and outdoor ceiling mounting. Compatible with all S15D sensor modules, allows for dual hemispheric capture.

MX-FLEX-OPT-DM-PW
For all optical S15D sensor modules

€38

SurroundMount



Designed for monitoring long, narrow areas (corridor, bus, train, etc.). By perfectly aligning two sensor modules at a 25° angle in opposite direction, two Hemispheric sensor modules can even cover an entire corridor – no blind spots.

MX-FLEX-OPT-SM-PW
For all optical S15D sensor modules L12, L25, L51

€38



Side view



*S15D SurroundMount
installed in a bus.*



S15D with SurroundMount

Hemispheric Video Improves Transportation Security

The Stadtwerke Kaiserslautern (SWK) public utility company makes bus transportation more secure with mobile IP video systems from MOBOTIX. A MOBOTIX FlexMount camera connected to a monitor shows the driver what is happening in the bus.

PTMount



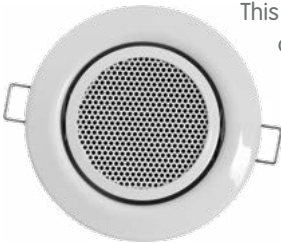
The PTMount converts S15D sensor modules into a robust IP dome camera that can be both wall or ceiling-mounted. The adjustable dome features a unique three-axis system allowing re-alignment that compensates for sideway tilt. This ensures that the sensor module can be correctly positioned for a perfect image capture (PTMount-Thermal see page 15).

MX-PTMount-OPT-PW

For all optical S15D sensor modules

€58

SpeakerMount



This high-quality speaker connects directly to the S15D via a two-wire cable and requires no additional power. Suitable for installation in ceilings or walls, indoors only. Available in white or matt chrome finish. In conjunction with the microphone built into the sensor modules, it turns the S15D into a 2-way communication system.

MX-HALO-SP-EXT-PW

For all S15D cameras

€128

HaloMount



For installations where discretion and design consideration is important.

This stylish high-quality wall/ceiling metal mounting bracket comes in five versions (matt chrome, glossy chrome, brushed nickel, white or black). Compatible with single-sensor modules or downlights. Sensor modules placed into the HaloMount can be tilted up to 20 degrees, for perfect capture.

MX-HALO-EXT-PW

For all optical S15D sensor modules

€32

Design-Friendly And Easy To Install

With the new mounts, expand the application scenarios for the S15D sensor modules. Each one offers a range of mounting possibilities that caters to the needs of any installation.

M15D/S15D Sensor Modules



Optical sensor modules are compatible with the M15D and S15D.

Modular Imaging System.

Each sensor module consists of a lens, image sensor and microphone. Designed for the M15D and S15D, the modules can be interchanged within minutes, at any time. The modules are weatherproof (IP66) and can be installed both indoors and outdoors. Choose between optical and thermal sensors.

from €198

Sensor Modules Technical Overview

Image Sensors	1/2,5" CMOS (5MP), 1/1,8" CMOS (6MP)	Sensor Resolution	5MP: 2592×1944 pixels (Color/B&W), 6MP: 3072×2048 pixels (Color/B&W), Thermal: 336×252 pixels
Operating Conditions	IP66, -30 to +60 °C/-22 to +140 °F	Audio	Microphone in each module (except Thermal modules)

Easily Exchangeable Sensor Modules

The MOBOTIX S15D/M15D modular system allows the sensor modules to be changed within minutes. This way, the camera optics, such as the field of view or sensor type can be easily exchanged.

S15D/M15D Sensor Modules 5MP

from €198

with lens D/N

from €298

with LPF



Pure White
(PW)

Black
(BL)

Day (color)
normal lighting

MX-SM-D12-PW
MX-SM-D23-PW
MX-SM-D25-PW
MX-SM-D38-PW
MX-SM-D51-PW
MX-SM-D76-PW
MX-SM-D160-PW

Night (B&W)
lowlight

MX-SM-N12-PW
MX-SM-N23-PW
MX-SM-N25-PW
MX-SM-N38-PW
MX-SM-N51-PW
MX-SM-N76-PW
MX-SM-N160-PW

Long Pass Filter (LPF)
for license plate recognition

MX-SM-N12-LPF-PW
MX-SM-N23-LPF-PW
MX-SM-N25-LPF-PW
MX-SM-N38-LPF-PW
MX-SM-N51-LPF-PW
MX-SM-N76-LPF-PW
MX-SM-N160-LPF-PW

S15D/M15D Sensor Modules 6MP

from €298

with lens D/N

from €398

with LPF



Pure White
(PW)

Day (color)

MX-SM

-D10-PW-6MP
-D20-PW-6MP-F1.8
-D22-PW-6MP-F1.8
-D32-PW-6MP-F1.8
-D43-PW-6MP-F1.8
-D65-PW-6MP-F1.8
-D135-PW-6MP-F1.8

Night (B&W)

MX-SM

-N10-PW-6MP
-N20-PW-6MP-F1.8
-N22-PW-6MP-F1.8
-N32-PW-6MP-F1.8
-N43-PW-6MP-F1.8
-N65-PW-6MP-F1.8
-N135-PW-6MP-F1.8

Long Pass Filter (LPF)

MX-SM

-N10-LPF-PW-6MP
-N20-LPF-PW-6MP-F1.8
-N22-LPF-PW-6MP-F1.8
-N32-LPF-PW-6MP-F1.8
-N43-LPF-PW-6MP-F1.8
-N65-LPF-PW-6MP-F1.8
-N135-LPF-PW-6MP-F1.8

Sensor modules available: Day (color) • Night (black & white) • Long-pass filter
Modules can be installed by the user in the S15D and M15D and are interchangeable.

S15D/M15D Sensor Modules CS-Mount



CS-Mount Options for high definition premium lenses.

S15D Thermal Sensor Modules

from €2,968

from €3,098



Thermal-
sensor module



PTMount-
Thermal

Thermal Sensor Modules
(for flush mounting)

MX-SM-Thermal-L43
MX-SM-Thermal-L65
MX-SM-Thermal-L135

PTMount-Thermal
(with integrated thermal sensors)

MX-SM-PTMount-Thermal-L43
MX-SM-PTMount-Thermal-L65
MX-SM-PTMount-Thermal-L135

The thermal sensors can be retrofitted and easily connected to the S15D with a sensor cable (max. length 2 m). The sensor modules cannot be individually replaced in the PTMount-Thermal. For information on the M15D-Thermal Thermographic Camera, see page 12.

More Than Just A Lens

Optical sensor modules (IP66) have a lens, an image sensor, built-in microphone and two status LEDs. The sensor modules are connected to the M15D and S15D via specially designed gigabit video cables. Mounting accessories for the S15D (e.g., SurroundMount, DualMount, PTMount) are also available, making it the ideal choice for a wide range of surveillance applications.

S15D BlockFlexMount & Long Pass Filter

S15D BlockFlexMount Sensor Modules 5MP

from **€168**

with lens D/N

€268 with LPF



Day (color)
normal lighting

MX-BFM-MX-D12
MX-BFM-MX-D23
MX-BFM-MX-D25
MX-BFM-MX-D38
MX-BFM-MX-D51
MX-BFM-MX-D76
MX-BFM-MX-D160
MX-BFM-MX-D320

Night (B&W)
lowlight

MX-BFM-MX-N12
MX-BFM-MX-N23
MX-BFM-MX-N25
MX-BFM-MX-N38
MX-BFM-MX-N51
MX-BFM-MX-N76
MX-BFM-MX-N160
MX-BFM-MX-N320

Long Pass Filter (LPF)
for license plate recognition

MX-BFM-MX-N23-LPF
MX-BFM-MX-N25-LPF
MX-BFM-MX-N38-LPF
MX-BFM-MX-N51-LPF
MX-BFM-MX-N76-LPF
MX-BFM-MX-N160-LPF
MX-BFM-MX-N320-LPF

S15D BlockFlexMount Sensor Modules 6MP

from **€268**

with lens D/N

€368 with LPF



Day (color)

MX-BFM-MX
-D10-6MP
-D20-6MP-F1.8
-D22-6MP-F1.8
-D32-6MP-F1.8
-D43-6MP-F1.8
-D65-6MP-F1.8
-D135-6MP-F1.8
-D270-6MP

Night (B&W)

MX-BFM-MX
-N10-6MP
-N20-6MP-F1.8
-N22-6MP-F1.8
-N32-6MP-F1.8
-N43-6MP-F1.8
-N65-6MP-F1.8
-N135-6MP-F1.8
-N270-6MP

Long Pass Filter (LPF)

MX-BFM-MX
-N20-LPF-6MP-F1.8
-N22-LPF-6MP-F1.8
-N32-LPF-6MP-F1.8
-N43-LPF-6MP-F1.8
-N65-LPF-6MP-F1.8
-N135-LPF-6MP-F1.8
-N270-LPF-6MP

Rugged aluminum housing for concealed installation in automatic teller machines, machinery, vehicle panels, steel columns, etc.

Sensor Modules/ Lens Units With Long Pass Filters (LPF)

CS-Mount-BlockFlexModule

€148 for D or N variants
€248 with LPF



MX-BFM-CS-D (Day)
MX-BFM-CS-N (Night)
MX-BFM-CS-N-LPF (Night-LPF)



The LPF lens option is available for the M25M, M15D, S15D, D15D


LPF


The long pass filter (LPF) is part of a special black & white lens that, together with an infrared lamp, allows for optimal license plate recognition in all lighting conditions.

Recommended MOBOTIX lens:
CSVario MX-OPTCS-L24-54
(page 29)

"Even in difficult lighting – with backlight, vehicle headlight glare and reflections – MOBOTIX cameras produce images with sufficient contrast to read license plates in almost any condition. All this adds up to brilliant images and good recognition results."

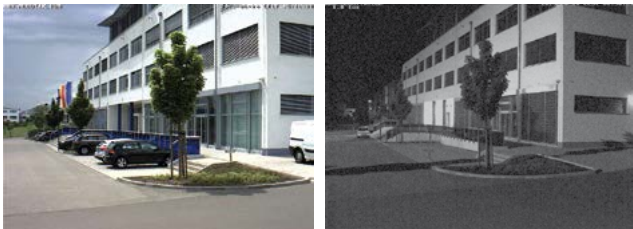
Dr. Andreas Scholz, CEO Axteq Access Control Systems


D15D Lens Units 5MP			
<p>€150 per unit €300 with LPF</p> 	<p>Day (color) normal lighting</p> <p>MX-D15-Module-D23 MX-D15-Module-D25 MX-D15-Module-D38 MX-D15-Module-D51 MX-D15-Module-D76 MX-D15-Module-D160</p>	<p>Night (B&W) lowlight</p> <p>MX-D15-Module-N23 MX-D15-Module-N25 MX-D15-Module-N38 MX-D15-Module-N51 MX-D15-Module-N76 MX-D15-Module-N160</p>	<p>Long Pass Filter (LPF) for license plate recognition</p> <p>MX-D15-Module-N23-LPF MX-D15-Module-N25-LPF MX-D15-Module-N38-LPF MX-D15-Module-N51-LPF MX-D15-Module-N76-LPF MX-D15-Module-N160-LPF</p>

D15D Lens Units 6MP			
<p>€250 per unit €400 with LPF</p> 	<p>Day (color)</p> <p>MX-D15-Module -D20-6MP-F1.8 -D22-6MP-F1.8 -D32-6MP-F1.8 -D43-6MP-F1.8 -D65-6MP-F1.8 -D135-6MP-F1.8</p>	<p>Night (B&W)</p> <p>MX-D15-Module -N20-6MP-F1.8 -N22-6MP-F1.8 -N32-6MP-F1.8 -N43-6MP-F1.8 -N65-6MP-F1.8 -N135-6MP-F1.8</p>	<p>Long Pass Filter (LPF)</p> <p>MX-D15-Module -N20-LPF-6MP-F1.8 -N22-LPF-6MP-F1.8 -N32-LPF-6MP-F1.8 -N43-LPF-6MP-F1.8 -N65-LPF-6MP-F1.8 -N135-LPF-6MP-F1.8</p>


The D15D camera housing includes two lens units that can be combined as required. They can be moved, thus making a precise alignment to the areas to be recorded possible.

Dual Camera Technology From MOBOTIX For Day And Night Recordings






S15D DualMount
Discreet design



M15D
Extremely robust



D15D
Dome design

Only MOBOTIX day-and-night cameras are able to offer a day and night sensor designed to ensure optimum image quality at all times. Both lenses capture the same area. The purely digital switchover between day and night sensors helps deliver higher image quality and guarantees a longer lifetime for the cameras.

"We chose MOBOTIX cameras based on their impressive array of features. I would like to mention the image quality in particular. I can zoom in on a potential troublemaker and I immediately have a detailed image of his or her face that I can send to the police, who can then identify the responsible person."

Sergey Burgela, Chief of Security at Donbass Arena, Ukraine

Lens Table



	L10	L12	L20	L23	L22	L25	L32	L38
Image sensor	6MP	5MP	6MP	5MP	6MP	5MP	6MP	5MP
Field of view (horizontal)								
35 mm Photo Equivalent	10 mm	12 mm	20 mm	23 mm	22 mm	25 mm	32 mm	38 mm
Aperture f/	2.0		1.8		1.8		1.8	
Image format	4:3		4:3		4:3		4:3	
Image angle horizontally	180°	180°	105°	92°	90°	82°	60°	55°
Image angle vertically	180°	160°	77°	68°	67°	61°	45°	41°










Maximum distances in meters (4:3 format, 2592 x 1944 pixels)

Surveillance up to (1 px $\hat{=}$ 80 mm)	55.5 m	117.5 m	132.0 m	207.9 m
Detection up to (1 px $\hat{=}$ 40 mm)	27.8 m	58.7 m	66.0 m	104.0 m
Monitoring up to (1 px $\hat{=}$ 16 mm)	11.1 m	23.5 m	26.4 m	41.6 m
Recognition up to (1 px $\hat{=}$ 8 mm)	5.6 m	11.8 m	13.2 m	20.8 m
Identification up to (1 px $\hat{=}$ 4 mm)	2.8 m	5.9 m	6.6 m	10.4 m
Verification up to (1 px $\hat{=}$ 1 mm)	0.7 m	1.5 m	1.6 m	2.6 m

DIN EN 50132-7

As specified in the DIN EN 50132-7 standard, there are six different levels of quality for video surveillance. "Verifying" is the level with the highest demands on image quality, whereas "Monitoring" is the one with the lowest. These can be used to determine the maximum distance between camera and surveillance area, the required minimum resolution, and the most suitable camera lens for optimal coverage of the surveillance area.



L43		L51		L65		L76		L135		L160		L270		L320		CSVario	
6MP		5MP		6MP		5MP		6MP		5MP		6MP		5MP		6MP 5MP	
																	
43 mm		51 mm		65 mm		76 mm		135 mm		160 mm		270 mm		320 mm		24-54 mm 28-64 mm	
1.8		1.8		1.8		1.8		1.8		1.8		2.5		2.5		f/1.6-f/2.3	
4:3		4:3		4:3		4:3		4:3		4:3		4:3		4:3		4:3	
45°		40°		31°		27°		15°		13°		8°		7°		39°-89° 32°-75°	
34°		30°		23°		20°		11°		10°		6°		5°		29°-65° 25°-56°	

290.1 m	440.6 m	888.7 m	1,787.6 m
145.1 m	220.3 m	444.3 m	893.8 m
58.0 m	88.1 m	177.8 m	357.5 m
29.0 m	44.1 m	88.9 m	178.8 m
14.5 m	22.0 m	44.4 m	89.4 m
3.6 m	5.5 m	11.1 m	22.3 m

Notes On The Table:

- px = pixel
- The specified distances increase by roughly five percent at the maximum 6-megapixel resolution (3072 x 2048 pixels, 3:2 special format).
- Online planning tool (optics): www.mobotix.com > Support > Planning Tools

Decentralized System

A World-First Technology

The first MOBOTIX product released was an IP camera with recording and DVR management technology built-in. It was a world-first. This decentralized approach was so revolutionary, it changed the video surveillance industry forever. Because the camera was completely self-managing, expensive central recording systems were, for the first time, no longer required.

The MOBOTIX decentralized system platform uses comparatively little computing power, even in megapixel resolutions, so it is far more cost-effective and easier to scale in size than traditional centralized systems.

As more cameras are added to the system, you only need to add more storage. No dedicated servers or recording software licenses needed. This low-cost, low-maintenance solution saves customers both upfront and over the life of the system.

MOBOTIX cameras are 'decentralized' because they are VMS-enabled with in-camera video recording, alarm and storage management.



MOBOTIX System decentralized

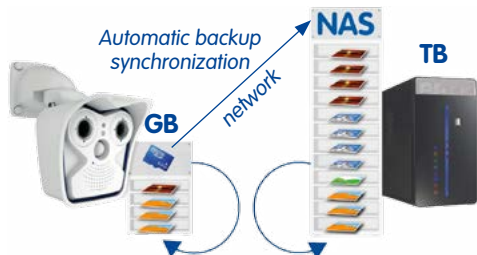


Software not required

Standard System not decentralized



Software required



Integrated terabyte recording with local failover storage

Decentralized IP Cameras Are More Intelligent Than Standard IP Cameras



Intelligent Processing



Recording Management



Video Management Software



Integrated Image Analysis and Sensors

Another Revolutionary World-First

The MOBOTIX decentralized platform paved the way for the world's first successful development of Hemispheric video technology. By combining a high-resolution image sensor with a Hemispheric lens, large areas can be captured, replacing 2 to 4 standard CCTV cameras. The Hemispheric camera processes and corrects the images internally, thus reducing bandwidth and server load. The camera also manages the virtual pan, tilt, zoom (vPTZ) within the live and recorded video.



Surround View: Quad



Pan and zoom within the live and recorded 360° image.



No blind spots! Everything captured.



The vPTZ and image correction is processed by the camera, not by an external PC with software.

What The Experts Say

"A camera from MOBOTIX contains a total video surveillance system within itself, including built-in DVR software, microphone, speaker, motion detection sensor, temperature sensor. Such product innovations have provided MOBOTIX with a significant competitive advantage, positioning it to grow strongly in the future."

Archana Rao, Video Market Research Analyst, Frost & Sullivan

Superior Image Quality

Highest Quality – Made In Gemany

Great imaging starts with great technology. For many security specialists, our innovative history is legendary and the reason they continue to choose MOBOTIX. Each and every product is carefully constructed using the most advanced optical, electronic and manufacturing technologies. We use only the highest-quality CMOS sensors and develop image processing software, which enables our cameras to produce exceptionally sharp, clean images. The MOBOTIX devices are continually perfected in our laboratories in Germany.



Each camera is tested at extreme temperatures before shipping.

MxPEG – A Codec Designed For Security

MOBOTIX developed MxPEG since the existing MPEG codecs were deemed unsuitable for IP video surveillance. MxPEG is the only video codec that has been designed for IP video surveillance applications, ensuring high-quality capture of movement occurs in every still frame.



A MOBOTIX camera captures a bird in flight. No blurring.

The sensor combined with MxPEG significantly reduces motion blur, allowing still image zooming in detail.

“At MOBOTIX we strive to develop IP cameras that produce the highest possible image quality, which is much more important than ‘highest resolution’. By combining a 6MP image sensor with MxLEO, our new low light image enhancing technology, the new MOBOTIX hardware platform is now unrivaled for high-resolution lowlight image capture and zooming.

Dr. Ralf Hinkel, MOBOTIX Founder

6MP Moonlight Technology

The new MOBOTIX 6MP cameras have an outstanding increase of light sensitivity of more than 100-times than the former 3MP cameras. The monochrome version reaches even a 300-times higher sensitivity than the previous series. Instead of one second of exposure time the new 6MP systems can select only 1/100 s which results in capturing even fast moving objects in low light conditions.

In security every single frame of a video recording has to be as sharp as possible. For moving objects short exposure time is the key. Unfortunately short exposure time of 1/100 s grabs 10-times less light than 1/10 s. Especially in low light conditions, the lens, the image sensor and the image processing have to be very sophisticated to generate sharp images of the moving object.

In dark scenes long exposure times of up to one second create bright images and visible static objects. This is perfect to acknowledge objects in darkness. But if objects are moving, long exposure times will create blurring, and make verification nearly impossible. In security applications moving objects are of utmost importance, therefore short exposure times are essential. Some brands are using a combination of technologies (for example Lightfinder, HDR, etc.). However, with this adding and overlaying of subsequent frames, small details could be suppressed, which is not acceptable in security applications.

This huge increase in light sensitivity was achieved by several means: wider sensor with bigger pixels, hardware noise reduction, new sophisticated lens with better light transmission, and an improved image processing reducing noise of low light images. This is called the new MOBOTIX Moonlight Technology because it enables the camera to generate color video of moving objects even in low light scenarios like moonlight.



3MP color sensor
0.5 lux



5MP color sensor
0.5 lux



6MP color sensor
0.5 lux



6MP B&W sensor
0.5 lux

Why Light Sensitivity Is So Important

One of the most important features that determines the quality of a security camera is its light sensitivity. A high light sensitivity allows for short exposure times, thus reducing motion blurring. This makes it easier to evaluate security-relevant footage, making details visible without the need for additional, expensive illumination.

Cost Benefits In Every Respect

- 1 High-Resolution Digital Image Rather Than TV Quality**
6MP sensor and image processing inside the camera generates sharp images with twice the resolution of full HDTV (1920x1080).
- 2 Decentralized Concept**
Each camera is an entire system, with everything integrated. You can add 10 times as many cameras per file server, as compared with centralized VMS systems.
- 3 No Storage Limit**
Each camera is able to manage its own terabyte-sized storage device (NAS) via the network – no additional management server or software needed.
- 4 HD Audio And SIP Technology**
Each camera is using the SIP standard for instant two-way communication including video, remote camera control and automatic alarm calling.
- 5 Unlimited Scalability**
More cameras and storage can be added at any time, even while the system is in use; image format, frame rate and recording parameters can be camera-specific.
- 6 High Quality • Made In Germany**
Robust and practically maintenance-free. Fiberglass-reinforced composite housing with built-in cable protection. No mechanically moving parts (no auto iris) to increase lifetime.
- 7 Day And Night Cameras**
MOBOTIX day and night cameras have two image sensors with digital switching between the color and black & white sensor for improved image quality and no mechanical parts.
- 8 Sun And Backlight Compensation**
Our high-quality CMOS sensor does not require an auto iris. Software-driven contrast enhancement and configurable exposure zones guarantee optimum exposure control.
- 9 Weatherproof**
Weatherproof design allows the camera to be installed anywhere without additional housings or climate systems to reduce power consumption and increase flexibility.
- 10 Efficient Video Codec For Security Applications**
The MOBOTIX MxPEG codec captures highest image quality and sharpness with detail on every still frame.

11

Simultaneous Recording, Event Search & Live Viewing

Each camera can handle live viewing for multiple users, recording and also event search from anywhere in the world via a network connection.

12

Low Power Consumption

Power costs reduced by up to 80% with MOBOTIX low-power consumption system. Each camera uses around 4 watts, with no heating/cooling required.

13

Remote Access Optimized

Camera manages frame rate and image size depending on the available bandwidth even for high quality & HiRes Recordings. This allows quality search even over mobile networks.

14

Bridging Of Recording During Network Failures

No loss of recordings. In-camera data storage of gigabytes can bridge longer network failures or bandwidth fluctuations.

15

MxFFS • Fail-Over Storage

Local gigabyte recording with automatic archiving to external file server with terabyte storage capacity – without any management software needed.

16

MxLEO • Lowlight Exposure Optimization

Reduced motion blur thanks to shorter exposure times. Even under low-light conditions, images are captured with better sharpness and less image noise.

17

Hemispheric Technology • 180° Panorama View

Secure an entire room, no blind spots, with virtual pan tilt and zoom. All image correction managed inside the Hemispheric camera – no additional computer needed.

18

Dual Thermal Cameras With 6MP Optical Sensor

The most advanced security camera solution. The thermal sensor detects movement in all lighting conditions, and the optical sensor can identify people and vehicles.

19

MxActivitySensor • Intelligent Motion Detection

MxActivitySensor reduces false alarms by up to 90% by detecting only movement of people and vehicles, while ignoring redundant motion. Almost no configuration time.

20

Professional Video Management Software For Systems Of Any Size

Our free-of-charge video management and recording software, used in tens of thousands of systems around the world, sets no limits on the number of users, cameras or servers.

MOBOTIX Campus

The MOBOTIX certification program is important for professionals seeking expertise in next-generation IP video surveillance systems.

MOBOTIX has developed a range of courses, which cater to people in both sales and engineering job functions. Our programs will continue to evolve and expand, to adapt to market demands and available technologies.

Obtaining certification requires the successful completion of all training seminars.

www.mobotix.com > Partners > Seminars

SPI-Workshop	
Duration	1 day
Audience	Sales people and engineers
Overview	Sales, Planning & Installation Workshop. Students will learn how to consult with the customer to specify and plan the right solution. We show how to align MOBOTIX and other technologies to fit the requirements of the application.
Content	<ul style="list-style-type: none">• Consulting and planning• Calculating viewing angles• Camera and lens selection• Camera positioning• Selecting peripheral devices <p>The SPI workshop is a vital start for technical sales people wanting to sell MOBOTIX systems. Engineers new to MOBOTIX, should also attend.</p>



Starter Seminar	
Duration	1 day
Audience	Sales people and engineers
Overview	Crash course on quick installation of MOBOTIX cameras using the intuitively designed MxManagementCenter software. This seminar communicates all information fundamentally necessary to set up private and commercial projects in a time and cost saving manner with basic knowledge of networks.
Content	<ul style="list-style-type: none"> • MxManagementCenter – Setup and use • Image settings and exposure • Event detection • Memory configuration • vPTZ in hemispheric models • Video export <p>While this workshop is primarily geared toward installation technicians, technical sales staff may also benefit from attending the seminar.</p>

Advanced Seminar	
Duration	1 day
Audience	Engineers after successfully completing Starter Seminar
Overview	This seminar is a follow-up to the crash course. Advanced configuration options are presented on the basis of an installation scenario. The knowledge gained here is augmented by hands-on exercises.
Content	<ul style="list-style-type: none"> • MxManagementCenter – Advanced functions • Image settings and exposure (advanced) • Other event triggers and alarm configurations • System maintenance and updates • Notifications – E-mail, FTP, network messages



CMOS

Complementary metal-oxide semiconductor (CMOS) sensors efficiently transform light into electrons to facilitate image capturing. To further enhance light sensitivity and hence image quality, MOBOTIX has launched a new 1/1.8" 6-megapixel CMOS image sensor with moonlight technology.

DVR

A Digital Video Recorder typically consists of a Windows PC with licensed video management software (VMS) installed. MOBOTIX cameras do not require a DVR, since the VMS is already installed in the cameras.

IK rating

Indicates the degree of resistance against impact. MOBOTIX cameras with the appropriate vandalism sets have the highest impact rating of IK10 or better.

IP camera

Network-based camera that is using the Internet Transfer Protocol (TCP/IP) to establish video, audio and data connections.

IP rating

Ingress Protection is given as a two digit classification, which indicates the level of protection against water and dust. Most MOBOTIX devices are weatherproof rated at IP65 or IP66. The first digit classifies protection against foreign objects (6 – dustproof), the second digit classifies protection against water (5 – protected against water jets from any angle, 6 – protected against strong water jets from any angle).

MxBus

MxBus is a fully encrypted, two-wire bus system that connects and powers MOBOTIX devices over a distance of up to 50 m/55 yd for building automation and camera-driven control systems. When adding an MxBus device, it gets a secured key that encrypts the entire communication.

MxPEG

MxPEG is the only codec specifically designed for video surveillance systems. The encoding capabilities of MxPEG by far exceed that of H.264 for capturing and recording movement in varying lighting conditions.

NAS

Network Attached Storage is a computer that is dedicated to file sharing only and thus more stable than Windows-based PCs. Generally Linux-based.



PoE/PoE+

Power over Ethernet is a standard for transferring both data and power via an Ethernet cable. All MOBOTIX cameras are PoE-enabled and can be powered using a standard (IEEE 802.3af/at) PoE network switch.

PTZ

Pan, Tilt, Zoom usually refers to the mechanical movement of the camera. vPTZ refers to the digital movement and zooming within the camera's field of view. MOBOTIX cameras have no moving parts, and thus use virtual Pan, Tilt, Zoom (vPTZ).

RFID

Radio-Frequency Identification (RFID) is the wireless non-contact use of radio-frequency electromagnetic fields to transfer data, for the purposes of automatically identifying objects such as swipe cards to allow door access, for example.

SD/microSD card

Data is recorded on the factory-installed 4GB microSD card built into the camera, for example, on an NAS; the camera buffers the data on the internal SD card when the connection is severed and automatically synchronizes it at a later time.

SIP

The Session Initiation Protocol is a network protocol that is used to establish and control connections via computer networks. SIP is used for phone calls and for audio/video connections to and from MOBOTIX cameras.

VMS

Video Management Software provides data monitoring, image analysis and recording management. The system intelligence and logic resides in the VMS. MOBOTIX cameras are VMS-enabled.

VoIP

A Voice-over-IP device can initiate and carry phone calls over an IP data network. All MOBOTIX video devices are VoIP-enabled.

WiFi

This standard (sometimes also referred to as Wireless LAN or WLAN) allows IP devices to connect to the Internet or communicate with one another without Ethernet cabling.



Proven Track Record In Large Scale Projects For Years



Lexington School
1,200 MOBOTIX Cameras, U.S.A.



DEPOT Logistics Center
66 MOBOTIX Cameras, Germany



Barwa Financial District
1,300+ MOBOTIX Cameras, Qatar



Tyger Valley Shopping Centre
48 MOBOTIX Cameras, South Africa



ODS Optical Service GmbH
264 MOBOTIX Cameras, Germany



Multistrada Tire Manufacturer
134 MOBOTIX Cameras, Indonesia



S. Florida Water Management District
147 MOBOTIX Cameras, U.S.A.



City of Dillingham, Traffic Security
80 MOBOTIX Cameras, U.S.A



Icelandic Road Traffic Directorate
256 MOBOTIX Cameras, Iceland



Panorama Towers
137 MOBOTIX Cameras, U.S.A.

See also: www.mobotix.com > References



Donbass Arena, UEFA EURO 2012 European Soccer Championship
528 MOBOTIX Cameras, Ukraine



Druzhba Arena, Hockey Stadium
600 MOBOTIX Cameras, Ukraine



Bergen County Jail
820 MOBOTIX Cameras, U.S.A.



Vatican Apostolic Library
70 MOBOTIX Cameras, Vatican City



City of Ghent Parking Authority
300 MOBOTIX Cameras, Belgium



Panama Ports Company
54 MOBOTIX Cameras, Panama



Valley Health Hospital
100+ MOBOTIX Cameras, U.S.A.



Republic Polytechnic
1,000 MOBOTIX Cameras, Singapore



Interislander Ferries
30 MOBOTIX Cameras, New Zealand



Calgary School
200 MOBOTIX Cameras, Canada

MOBOTIX



Professional Video Solutions

6MP Moonlight • VMS • Dual Thermal • IP Access Control • Analytics



Product Highlights:

- 6MP Moonlight Technology
- VMS MxManagementCenter
- c25 & i25 Hemispheric Indoor Cameras

