



Dual. Modular. Unique.

True to the original: The weatherproof, robust successor to our successful MOBOTIX dual camera features interchangeable sensor modules as well as the latest MOBOTIX system technology. The result is a product completely unrivaled in terms of performance, functionality and design.

- Weatherproof dual camera platform for two separately selectable 5MP sensor modules
- Image angle from telephoto lens to hemispheric (13° to 180°)
- Day and night sensor module can be used simultaneously in the camera
- Integrated DVR (up to 64 GB), weeks of recording without network load
- Robust, low-maintenance and weatherproof from -30 to +60 °C (-22 to +140 °F) (IP66)
- Digital, continuous zooming, panning, tilting
- Microphone, speaker and intelligent movement sensors (MxActivitySensor)

4

from €1,050 (incl. 1 sensor module L25, software)

M15D – HiRes Video Around The Clock

The M15D automatically selects the color sensor with daylight lens or the black/white image sensor with infrared lens – without high-maintenance mechanical switching. This provides for high-quality true-color images during the day and superb light sensitivity at night.

Camera Housing



- AllroundDual Core-Sec equipped with individual sensor modules (L12, L25, L38, L51, L76, L160) for day and night operation
- Robust and low maintenance with no moving parts
- Suitable for wall or ceiling mounting

Accessories



Pole mount

- 3 mm powder-coated stainless steel
- 2 stainless steel straps for pole diameters from 6 to 18 cm, incl. mounting parts



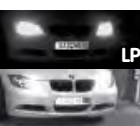
MX-Overvoltage-Protection-Box-LSA/-RJ45

- Weatherproof network connector
- Surge protection up to 4,000 V
- For connecting a network via patch cable or standard network cable



ExtIO function expansion

- Microphone/Speaker
- Infrared motion sensor, temperature sensor
- 2 signal inputs, 2 signal outputs, 2 illuminated keys



LPF sensor module

- LPF (long pass filter) special lens available for all night sensor modules, utilization in combination with IR illumination
- Basis for optimal license plate recognition



Polarization filter

- For all non-hemispheric sensor modules
- Reduces reflections on glass surfaces
- For instance for identifying the driver of a car/truck (behind the windshield)

5-Megapixel Sensor (5MP)



Even fast-moving objects such as this pigeon can be identified easily without any motion blur. When the light intensity fades, e.g., during dusk, the MOBOTIX Lowlight Exposure Optimization (MxLEO) shortens exposure times to deliver crisp images.

Technical Data

Model versions	Sec (all combinations of 5MP day and night sensor modules possible, including LPF)
Lens options	12 to 160 mm format, horizontal angle 180° to 13°
Sensitivity	Color sensor: 0.25 lux at 1/60 s, 0.013 lux at 1 s B/W sensor: 0.05 lux at 1/60 s, 0.0025 lux at 1 s MxLEO – Lowlight Exposure Optimization
Image sensors	1/2.5" CMOS, 5 megapixels, progressive scan
Max. image size (per sensor)	Color: 2048 x 1536 (QXGA), B/W: 2048 x 1536 (QXGA)
Image formats (per sensor)	Freely selectable image format (160 x 120 up to 2048 x 1536); PTZ views: Surround (Quad), fisheye full image, normal, panorama, double panorama, panorama focus (3 views)
Max. frame rate M-JPEG (live/recording)	VGA: 30 fps, MEGA/HD: 10 fps, QXGA: 4 fps, 6MEGA: 2 fps
Max. video rate MxPEG (live/recording/sound)	VGA: 30 fps, MEGA/HD: 30 fps, QXGA: 20 fps, 6MEGA: 8 fps
Image compression	MxPEG, M-JPEG, JPEG, H.264 (SIP video only)
Internal DVR	MicroSD Slot (recording inside the camera, up to 64 GB; 4-GB card preinstalled)
External storage	Directly on NAS and computer/server without additional recording software
Software (free of charge)	MxEasy video management software, MxControlCenter control center software, MOBOTIX App for iOS devices iOS 5.0 and higher
Image processing	Backlight compensation, automatic white balance, image distortion correction (incl. panorama image correction), motion detection, MxActivitySensor
Virtual PTZ (vPTZ)	Digital pan/tilt/zoom, continuous 8x zoom, full image recording in the background
Alarm/events	Video motion sensor, MxActivitySensor, external signals, temperature sensor, PIR, microphone, shock detector, notification via e-mail, FTP, IP telephony (VoIP, SIP), visual/acoustic alarm, pre- and post-alarm images
Audio	Integrated microphone & speaker, lip-synchronous audio, intercom, sound recording
Interfaces	Ethernet 10/100, IPv4/IPv6, MiniUSB, MxBus; IO and RS232 via MX-232-IO-Box (accessory)
Video telephony	VoIP/SIP, intercom, remote controlling with key code, event notification
Security	User/group management, HTTPS/SSL, IP address filter, IEEE 802.1x, intrusion detection, digital image signature
Certifications	EMC (EN 55022, CISPR 22, EN 55024, EN 61000-6-1/2, FCC part 15B, CFR 47, AS/NZS 3548)
Power supply	Power over Ethernet (PoE in accordance with IEEE802.3af): PoE class variable (2/3) depending on operating mode; power consumption: typ. 4.5 or 5 watts (for 1 or 2 sensor modules)
Operating conditions	IP66, -30°C to +60°C (-22°F to +140°F)
Dimensions	W x H x D with wall mount: 15.8 x 24.4 x 23.9 cm W x H x D with ceiling mount: 15.8 x 21.0 x 20.7 cm
Weight (without sensor modules)	with wall mount: approx. 1,129 g with ceiling mount: about 1,078 g

M15D – HiRes Video Even Under Extreme Conditions

The M15D camera is certified according to IP66 and has been successfully tested in a temperature range of -30°C to +60°C (-22°F to +140°F). In line with the proven MOBOTIX product strategy, the M15D model does not require additional cooling, heating or a special housing, meaning it needs only five watts of power to be fully operational.